

**KINGSTON UNIVERSITY STUDENT NUMBERS  
01 December 2009 Census - 2009/0 Academic Year**

The attached pages provide a summary profile of Kingston University's student population from the 01 December 2009 Census - the traditional Higher Education census date.

The Census data is extracted from the University Student Records System and corresponds to the HEFCE Higher Education Students' Early Statistics (HESES) Survey census date.

Students excluded: Dormant students; Research Students who are writing-up their thesis; Students studying for the whole of their programme overseas; Incoming exchange students; Affiliated students; Students who left the institution before 01 December 2009; Students who start in 2009/0 but after 01 December 2009.

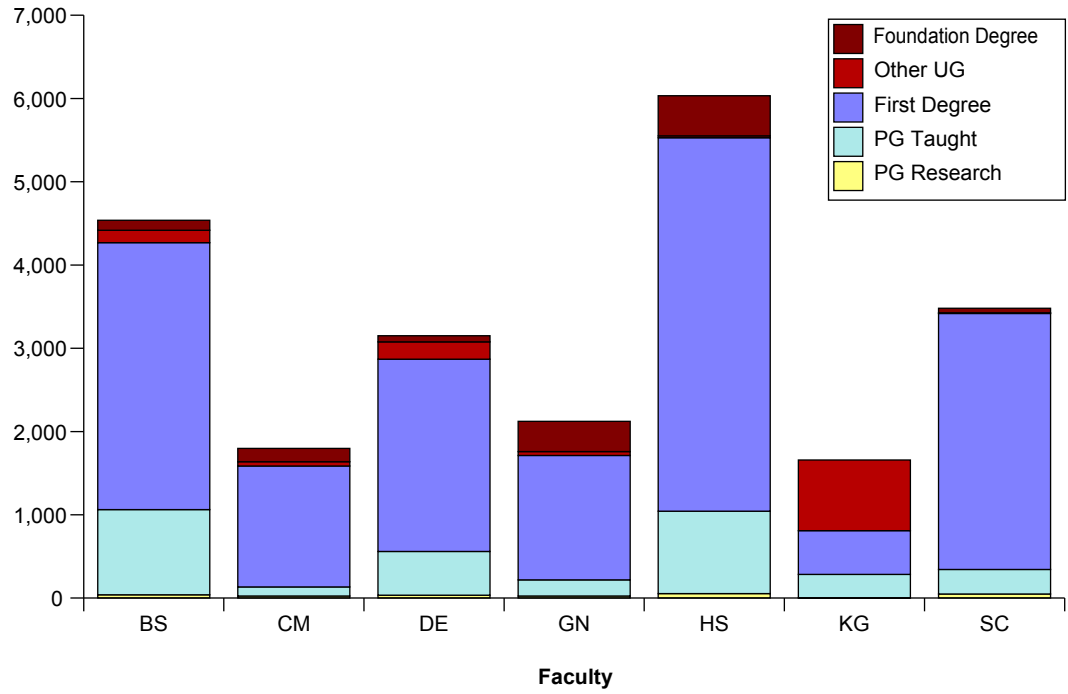
<b>Page 2</b>	<b>Level &amp; Mode by Faculty</b>
<b>Page 3</b>	<b>Summary Level &amp; Mode; Gender by Faculty</b>
<b>Page 4</b>	<b>New Entrants by Level &amp; Faculty</b>
<b>Page 5</b>	<b>Age on Entry</b>
<b>Page 6</b>	<b>Ethnicity</b>
<b>Page 7</b>	<b>Disability</b>
<b>Page 8/9</b>	<b>Fee Status</b>
<b>Page 10</b>	<b>Main University Sites</b>
<b>Page 11</b>	<b>UK Study Locations</b>
<b>Page 12</b>	<b>Geographical Area of Permanent Domicile</b>
<b>Page 13</b>	<b>Overseas Students Permanent Domicile</b>

# Census Student Summary - Level & Mode by Faculty - 1st December 2009

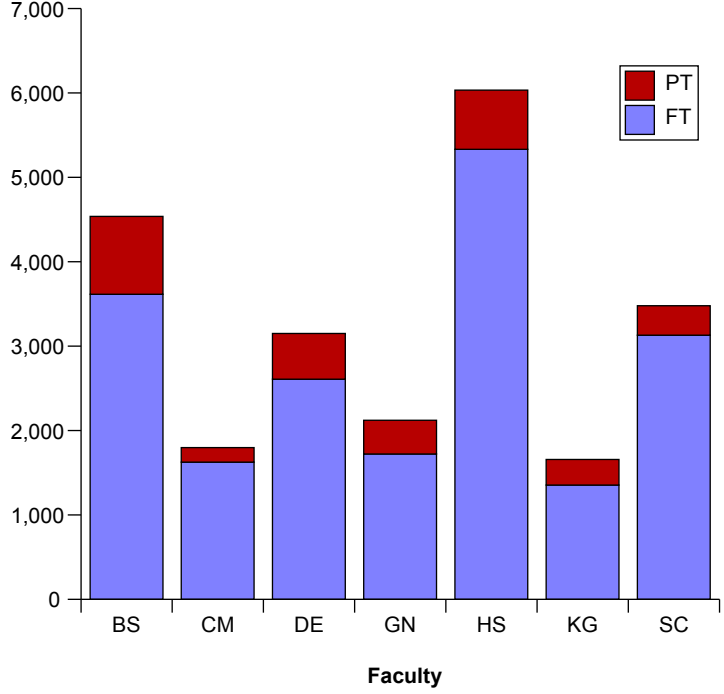
Faculty	Level of Study					Grand Total
	Foundation Degree	Other UG	First Degree	PG Taught	PG Research	
Art, Design & Architecture (DE)	73	209	2,309	525	35	3,151
Arts & Social Sciences (HS)	482	23	4,486	990	53	6,034
Business & Law (BS)	121	149	3,206	1,023	39	4,538
Comp, IS & Maths (CM)	161	50	1,454	108	25	1,798
Engineering (GN)	363	48	1,493	194	25	2,123
Health & Social Care Sciences (KG)	-	849	525	280	4	1,658
Science (SC)	53	8	3,075	295	49	3,480
<b>Grand Total</b>	<b>1,253</b>	<b>1,336</b>	<b>16,548</b>	<b>3,415</b>	<b>230</b>	<b>22,782</b>

Faculty	Mode		Grand Total
	FT	PT	
Art, Design & Architecture (DE)	2,609	542	3,151
Arts & Social Sciences (HS)	5,332	702	6,034
Business & Law (BS)	3,615	923	4,538
Comp, IS & Maths (CM)	1,626	172	1,798
Engineering (GN)	1,722	401	2,123
Health & Social Care Sciences (KG)	1,355	303	1,658
Science (SC)	3,130	350	3,480
<b>Grand Total</b>	<b>19,389</b>	<b>3,393</b>	<b>22,782</b>

**Student Numbers by Level**



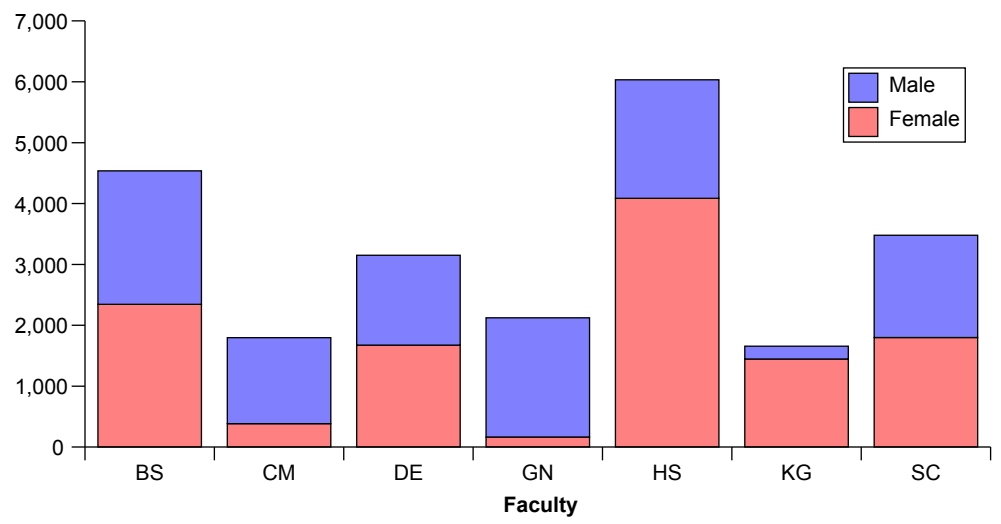
**Student Numbers by Mode**



# Census Student Summary - Gender, Level & Mode 1st December 2009

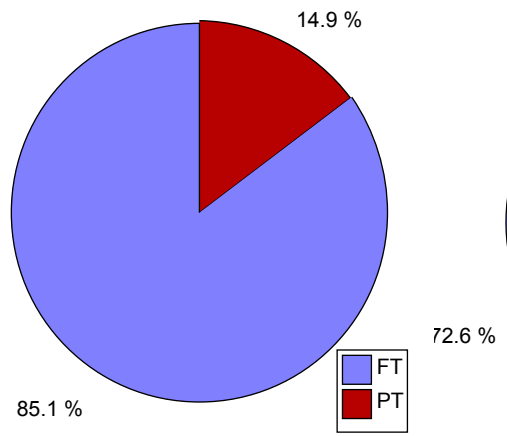
Gender			
Faculty	Female	Male	Grand Total
Art, Design & Architecture (DE)	1,675	1,476	3,151
Arts & Social Sciences (HS)	4,086	1,948	6,034
Business & Law (BS)	2,345	2,193	4,538
Comp, IS & Maths (CM)	385	1,413	1,798
Engineering (GN)	165	1,958	2,123
Health & Social Care Sciences (KG)	1,447	211	1,658
Science (SC)	1,800	1,680	3,480
<b>Grand Total</b>	<b>11,903</b>	<b>10,879</b>	<b>22,782</b>

### Student Numbers by Gender

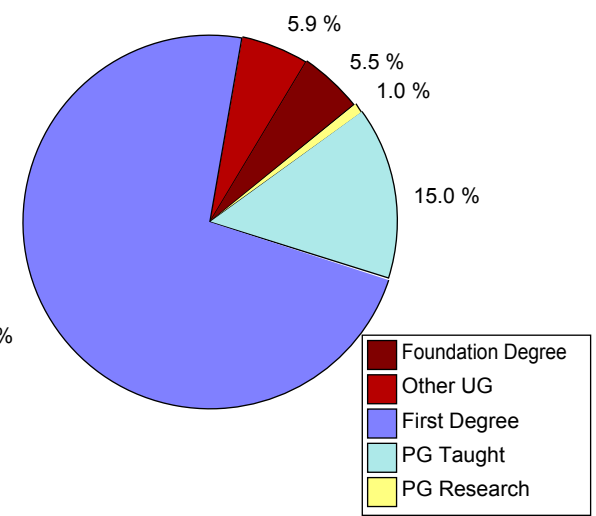


Mode			
Level	FT	PT	Grand Total
Foundation Degree	1,210	43	1,253
Other UG	1,243	93	1,336
First Degree	14,925	1,623	16,548
PG Taught	1,875	1,540	3,415
PG Research	136	94	230
<b>Grand Total</b>	<b>19,389</b>	<b>3,393</b>	<b>22,782</b>

### Student Numbers by Mode



### Student Numbers by Level







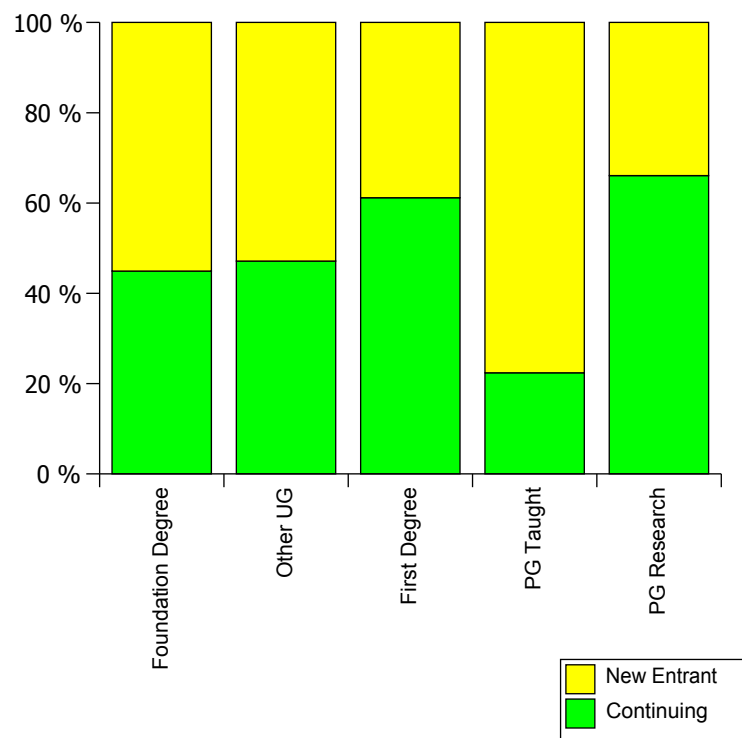


## Census Student Summary - New Entrants by Level & Faculty - 1st December 2009

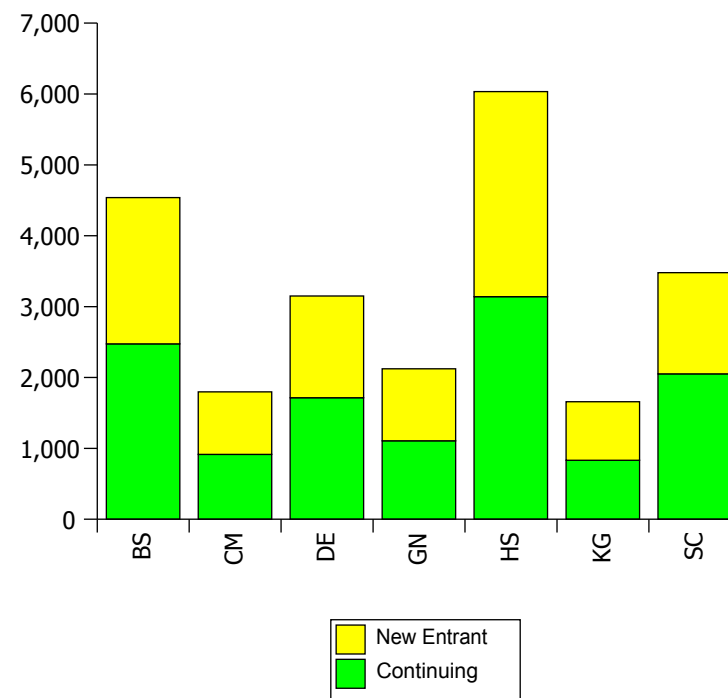
Faculty	Level of Study					Grand Total
	Foundation Degree	Other UG	First Degree	PG Taught	PG Research	
<b>Continuing</b>	563	630	10,126	765	152	<b>12,236</b>
<b>New Entrant</b>	690	706	6,422	2,650	78	<b>10,546</b>
<b>Grand Total</b>	<b>1,253</b>	<b>1,336</b>	<b>16,548</b>	<b>3,415</b>	<b>230</b>	<b>22,782</b>

Faculty	New Entrants		Grand Total
	Continuing	New Entrant	
<b>Art, Design &amp; Architecture (DE)</b>	1,715	1,436	<b>3,151</b>
<b>Arts &amp; Social Sciences (HS)</b>	3,140	2,894	<b>6,034</b>
<b>Business &amp; Law (BS)</b>	2,474	2,064	<b>4,538</b>
<b>Comp, IS &amp; Maths (CM)</b>	915	883	<b>1,798</b>
<b>Engineering (GN)</b>	1,107	1,016	<b>2,123</b>
<b>Health &amp; Social Care Sciences (KG)</b>	833	825	<b>1,658</b>
<b>Science (SC)</b>	2,052	1,428	<b>3,480</b>
<b>Grand Total</b>	<b>12,236</b>	<b>10,546</b>	<b>22,782</b>

### New Entrants by Level

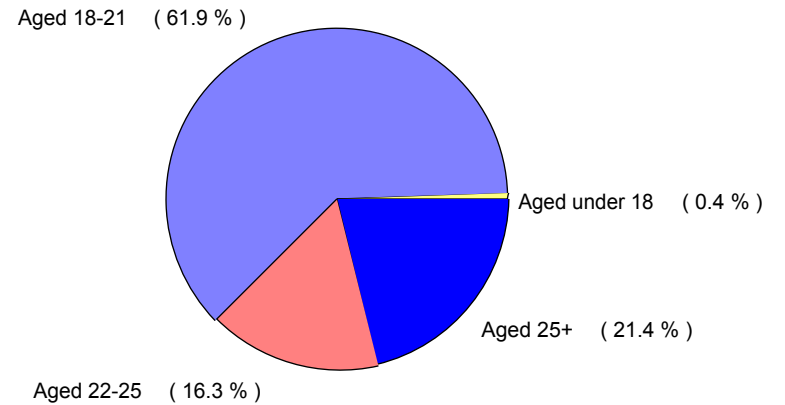


### New Entrants

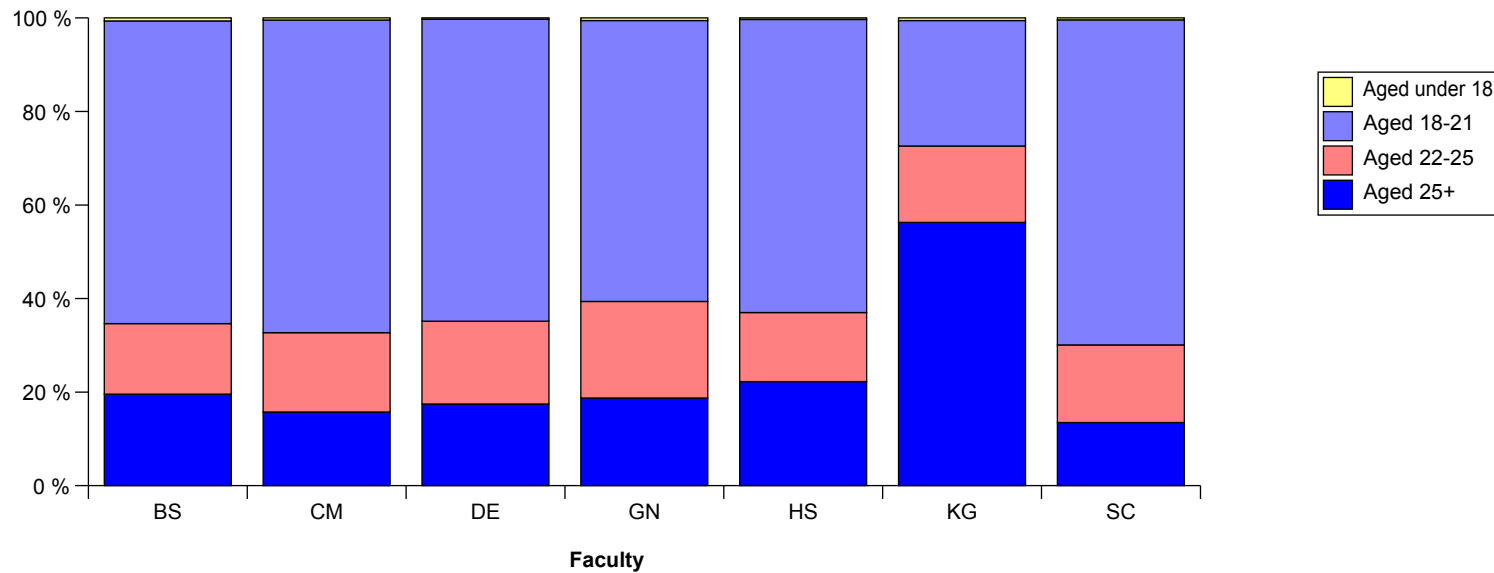


## Census Student Summary - Age on Entry Profile - 1st December 2009

Faculty	Age on Entry				Grand Total
	Aged under 18	Aged 18-21	Aged 22-25	Aged 25+	
Art, Design & Architecture (DE)	9	2,034	558	550	3,151
Arts & Social Sciences (HS)	19	3,782	890	1,343	6,034
Business & Law (BS)	29	2,936	685	888	4,538
Comp, IS & Maths (CM)	8	1,202	305	283	1,798
Engineering (GN)	12	1,275	438	398	2,123
Health & Social Care Sciences (KG)	9	445	271	933	1,658
Science (SC)	14	2,419	577	470	3,480
<b>Grand Total</b>	<b>100</b>	<b>14,093</b>	<b>3,724</b>	<b>4,865</b>	<b>22,782</b>



### Student Numbers by Age on Entry

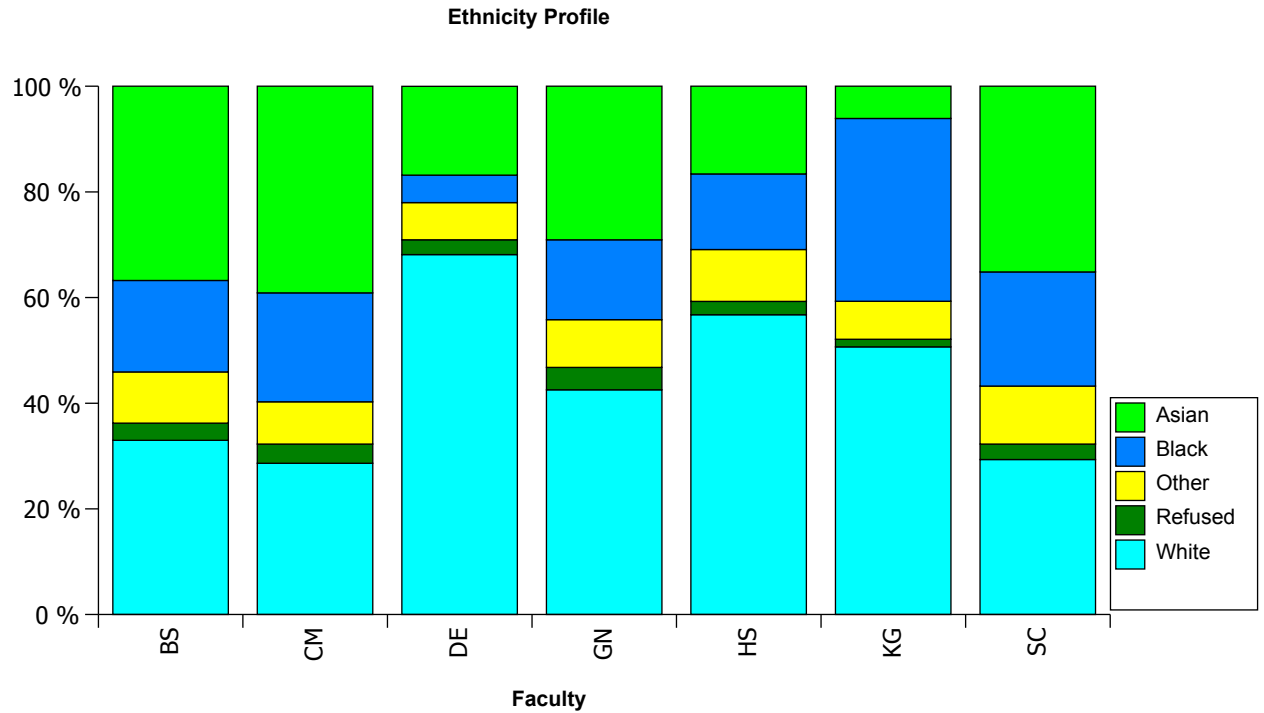




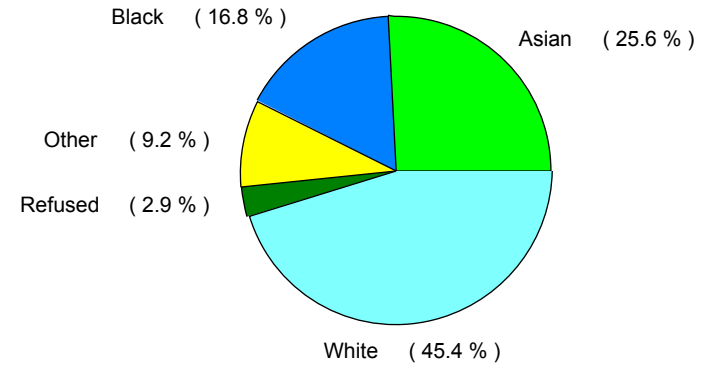
**Census Student Summary - Ethnicity Profile - 1st December 2009**

Faculty	Asian	Black	Other	Refused	White	Grand Total
Art, Design & Architecture (DE)	530	164	222	88	2,147	3,151
Arts & Social Sciences (HS)	1,001	864	592	152	3,425	6,034
Business & Law (BS)	1,668	786	440	147	1,497	4,538
Comp, IS & Maths (CM)	703	371	144	65	515	1,798
Engineering (GN)	617	321	192	90	903	2,123
Health & Social Care Sciences (KG)	101	574	119	24	840	1,658
Science (SC)	1,223	752	382	102	1,021	3,480
<b>Grand Total</b>	<b>5,843</b>	<b>3,832</b>	<b>2,091</b>	<b>668</b>	<b>10,348</b>	<b>22,782</b>

**Student Numbers by Ethnicity**



**Overall University Ethnicity Profile**

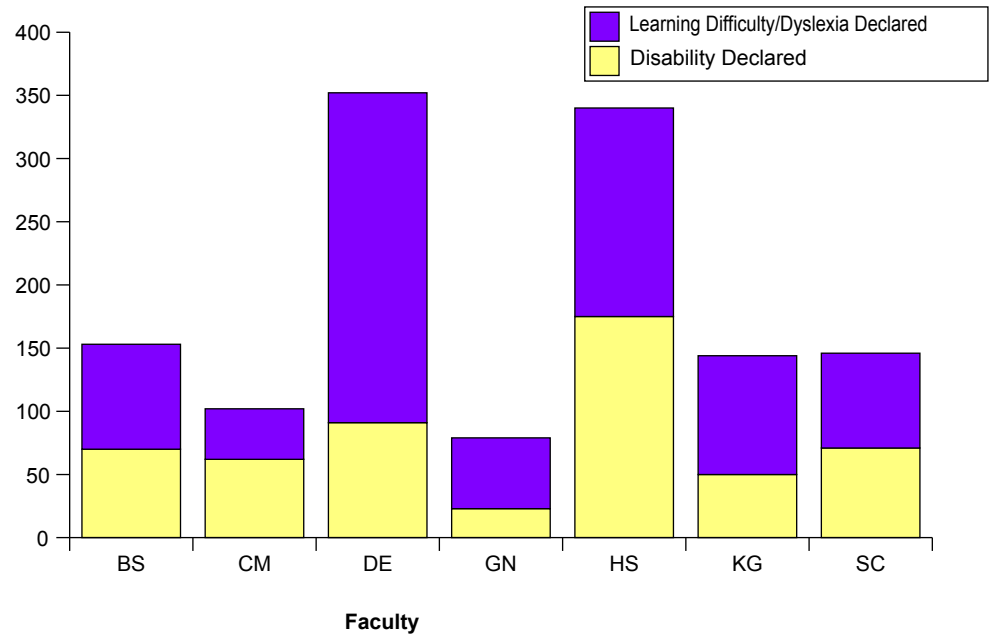


# Census Student Summary - Disability Profile - 1st December 2009

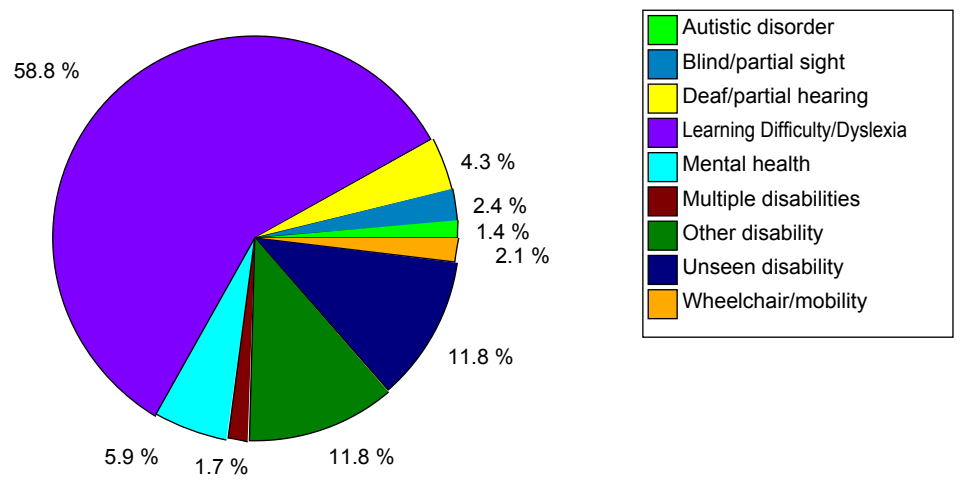
Disability Profile			
Faculty	Disability Declared	Learning Difficulty/Dyslexia Declared	Grand Total
Art, Design & Architecture (DE)	91	261	352
Arts & Social Sciences (HS)	175	165	340
Business & Law (BS)	70	83	153
Comp, IS & Maths (CM)	62	40	102
Engineering (GN)	23	56	79
Health & Social Care Sciences (KG)	50	94	144
Science (SC)	71	75	146
<b>Grand Total</b>	<b>542</b>	<b>774</b>	<b>1,316</b>

Disability Profile (declared only)	
Disability	Total
Autistic disorder	18
Blind/partial sight	31
Deaf/partial hearing	56
Learning Difficulty/Dyslexia	774
Mental health	78
Multiple disabilities	22
Other disability	155
Unseen disability	155
Wheelchair/mobility	27
<b>Grand Total</b>	<b>1,316</b>

**Student Numbers - Declared Disabilities**



**Declared Disabilities Proportion**



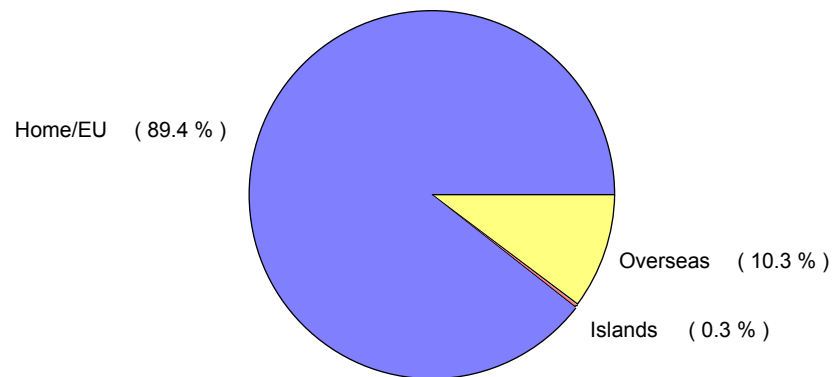
# Census Student Summary - Fee Status Profile - 1st December 2009

**Fee Status\***

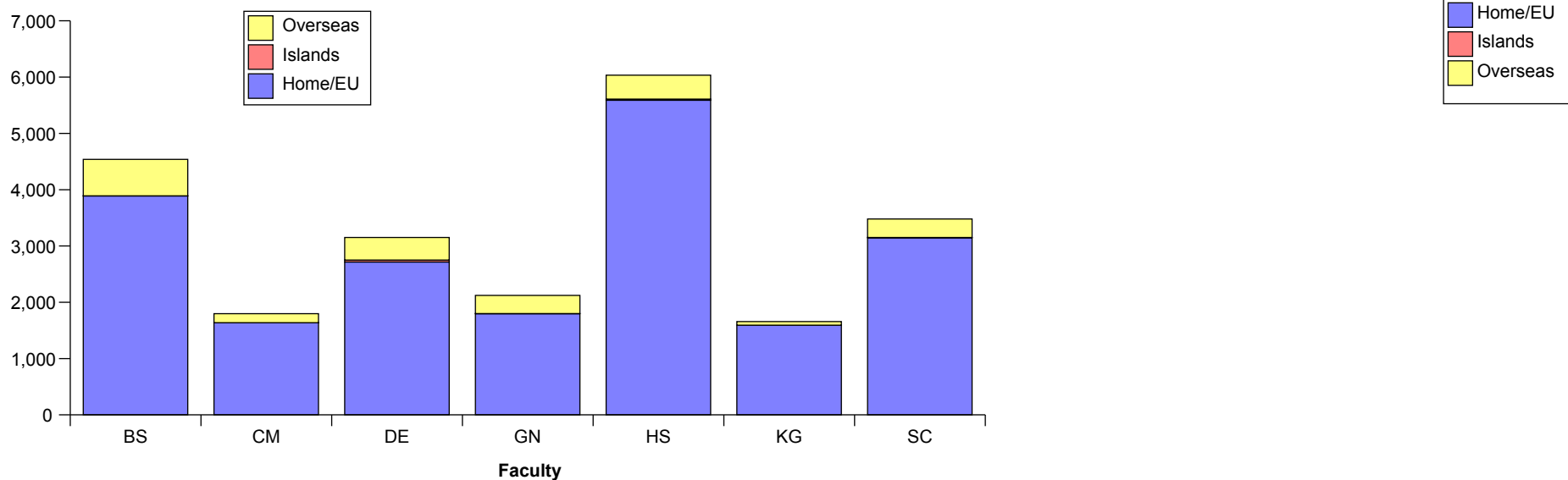
Faculty	Home/EU	Islands	Overseas	Grand Total
Art, Design & Architecture (DE)	2,715	35	401	3,151
Arts & Social Sciences (HS)	5,589	20	425	6,034
Business & Law (BS)	3,889	3	646	4,538
Comp, IS & Maths (CM)	1,635	3	160	1,798
Engineering (GN)	1,797	2	324	2,123
Health & Social Care Sciences (KG)	1,594	-	64	1,658
Science (SC)	3,147	4	329	3,480
<b>Grand Total</b>	<b>20,366</b>	<b>67</b>	<b>2,349</b>	<b>22,782</b>

\* ELQ Students grouped within Home/EU

### Student Numbers by Fee Status



### Student Numbers by Fee Status and Faculty



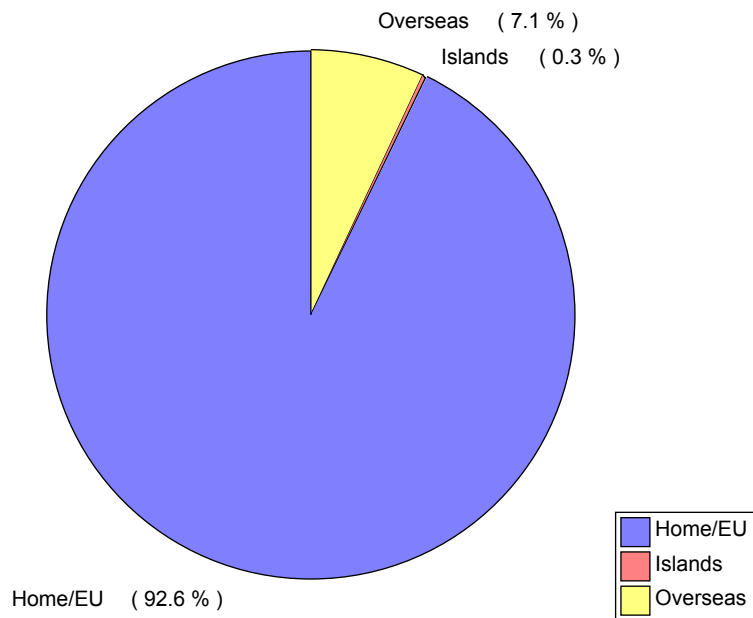
# Census Student Summary - Fee Status by Level Summary - 1st December 2009

Fee Status*				
Level	Home/EU	Islands	Overseas	Grand Total
UG	17,715	64	1,358	19,137
PG	2,651	3	991	3,645
<b>Grand Total</b>	<b>20,366</b>	<b>67</b>	<b>2,349</b>	<b>22,782</b>

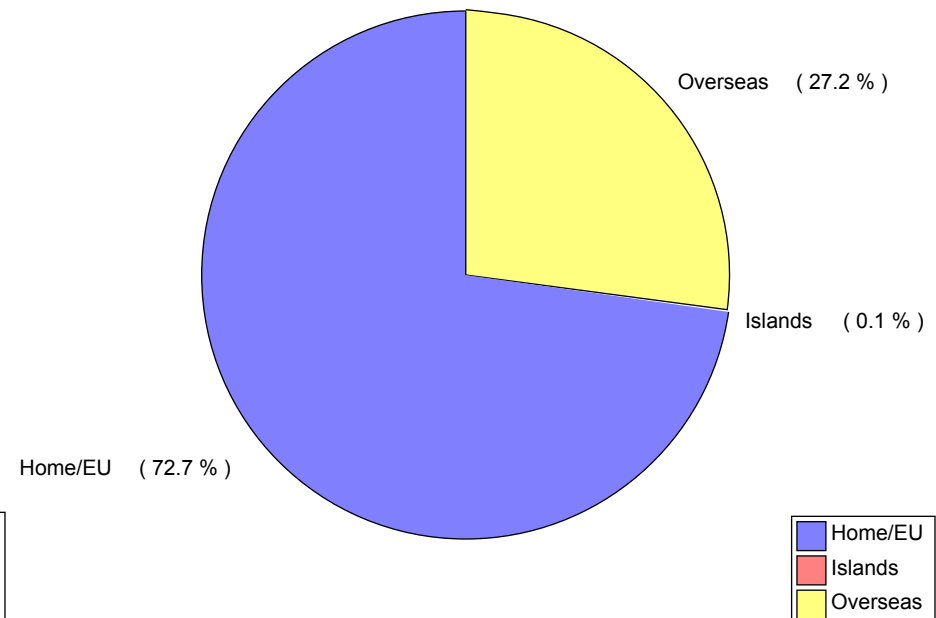
\* ELQ Students grouped within Home/EU

Level		Home/EU	Islands	Overseas	Grand Total
UG	New Entrant	7,230	22	566	7,818
UG	Continuing	10,485	42	792	11,319
PG	New Entrant	1,901	3	824	2,728
PG	Continuing	750	-	167	917
<b>Grand Total</b>		<b>20,366</b>	<b>67</b>	<b>2,349</b>	<b>22,782</b>

### Undergraduate Fee Status



### Postgraduate Fee Status

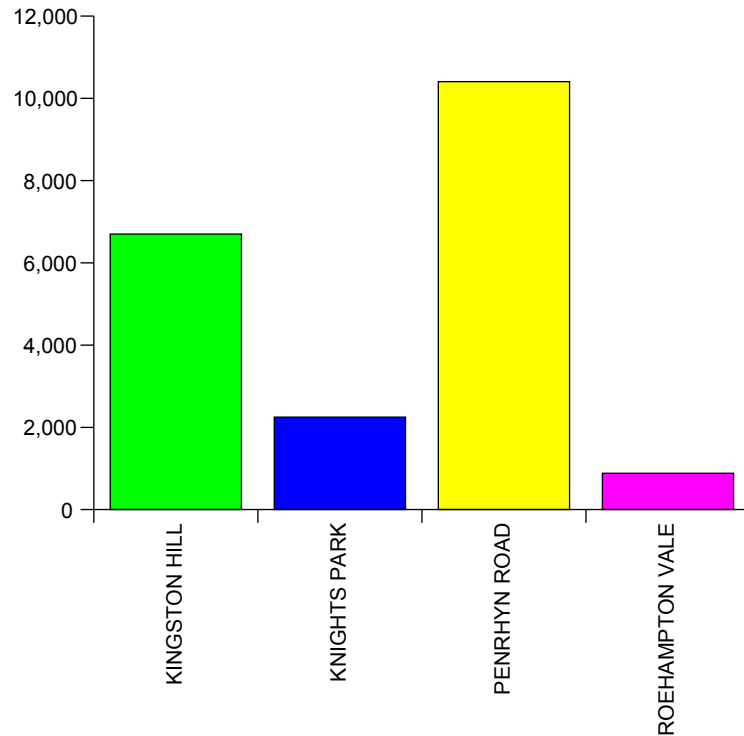


# Census Student Summary - University Main Sites - 1st December 2009

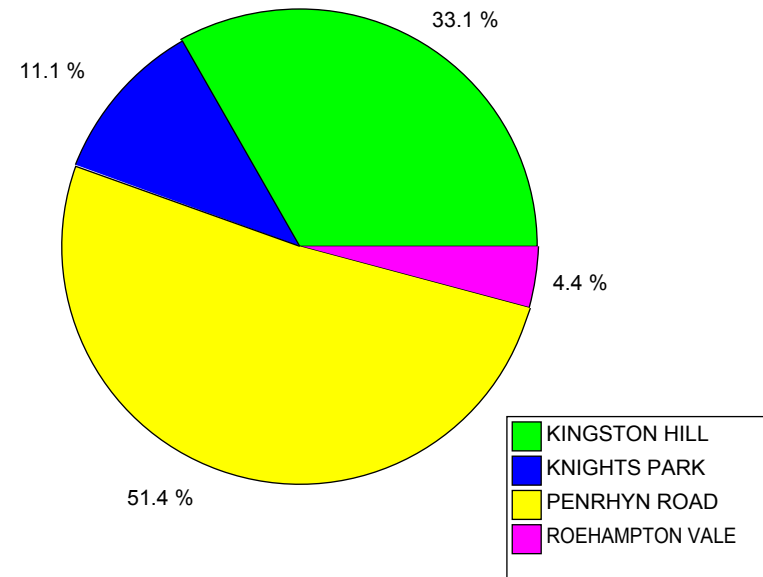
University Site	Grand Total
KINGSTON HILL	6,700
KNIGHTS PARK	2,248
PENRHYN ROAD	10,406
ROEHAMPTON VALE	884
<b>Grand Total</b>	<b>20,238</b>

Faculty	Kingston College	Other UK	University Sites	Grand Total
Art, Design & Architecture (DE)	9	98	3,044	3,151
Arts & Social Sciences (HS)	137	410	5,487	6,034
Business & Law (BS)	330	314	3,894	4,538
Comp, IS & Maths (CM)	204	124	1,470	1,798
Engineering (GN)	232	383	1,508	2,123
Health & Social Care Sciences (KG)	-	-	1,658	1,658
Science (SC)	250	53	3,177	3,480
<b>Grand Total</b>	<b>1,162</b>	<b>1,382</b>	<b>20,238</b>	<b>22,782</b>

**Student Numbers by Site**



**Student Numbers - Site Proportion**



**Census Student Summary - UK Locations - 1st December 2009**

	Kingston College	Other UK	University Sites	Grand Total
Aborfield	-	12	-	12
British Airways (Heathrow Airport)	-	44	-	44
BROOKLANDS COLLEGE	-	24	-	24
Building Crafts College	-	18	-	18
Capita (London)	-	22	-	22
CITY OF BRISTOL COLLEGE	-	48	-	48
CRANWELL - RAF TRAINING CENTRE	-	11	-	11
DELPHI DIESEL	-	8	-	8
DESIGN MUSEUM LONDON	-	34	-	34
EASTWOOD PARK	-	29	-	29
European Pilot Training Academy	-	27	-	27
HMS Sultan	-	52	-	52
HOUNSLOW TEACHERS CENTRE	-	14	-	14
INDUSTRIAL PLACEMENT	-	2	-	2
KINGSTON COLLEGE	1,162	-	-	1,162
KINGSTON HILL	-	-	6,700	6,700
KNELLER HALL (ROYAL MILITARY SCHOOL	-	9	-	9
KNIGHTS PARK	-	-	2,248	2,248
MARSHALLS AEROSPACE CAMBRIDGE	-	21	-	21
MERTON COLLEGE	-	107	-	107
NESCOT	-	44	-	44
NEWCASTLE	-	103	-	103
NEWTEC	-	61	-	61
NORWICH (KLM)	-	30	-	30
PENRHYN ROAD	-	-	10,406	10,406
RICHMOND ADULT & COMMUNITY COLLEGE	-	21	-	21
RICHMOND COLLEGE	-	235	-	235
ROEHAMPTON VALE	-	-	884	884
SOUTH THAMES COLLEGE	-	133	-	133
SPELTHORNE COLLEGE	-	32	-	32
SURREY TEACHERS CENTRE	-	38	-	38
University of Surrey (Guildford)	-	27	-	27
VEOLIA - Staines	-	38	-	38
WEST THAMES COLLEGE	-	72	-	72
WHITEFIELDS SCHOOL	-	66	-	66
	<b>1,162</b>	<b>1,382</b>	<b>20,238</b>	<b>22,782</b>

## Census Student Summary - Geographical Area of Domicile - 1st December 2009

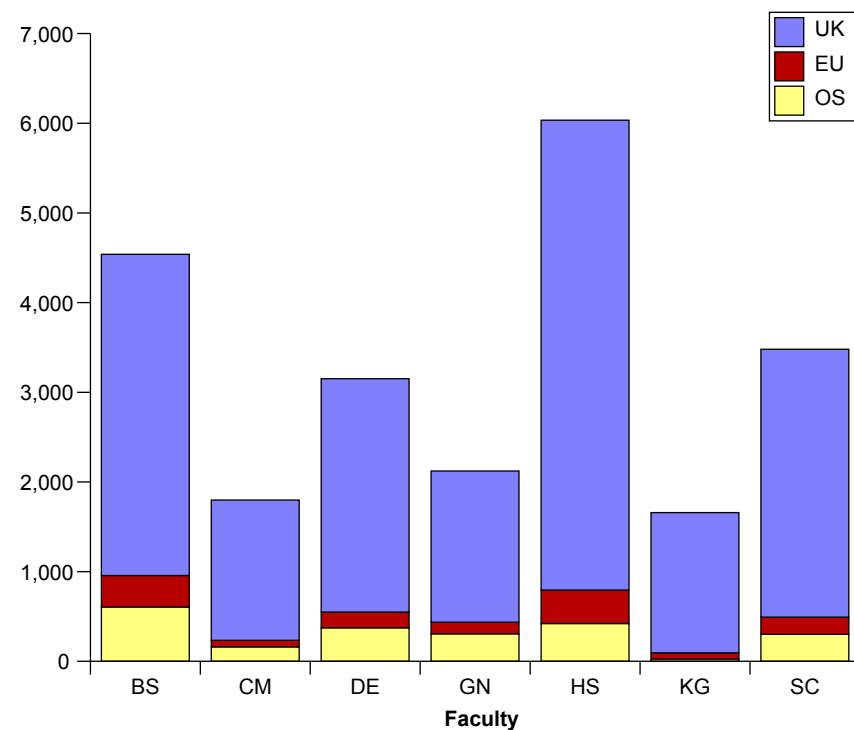
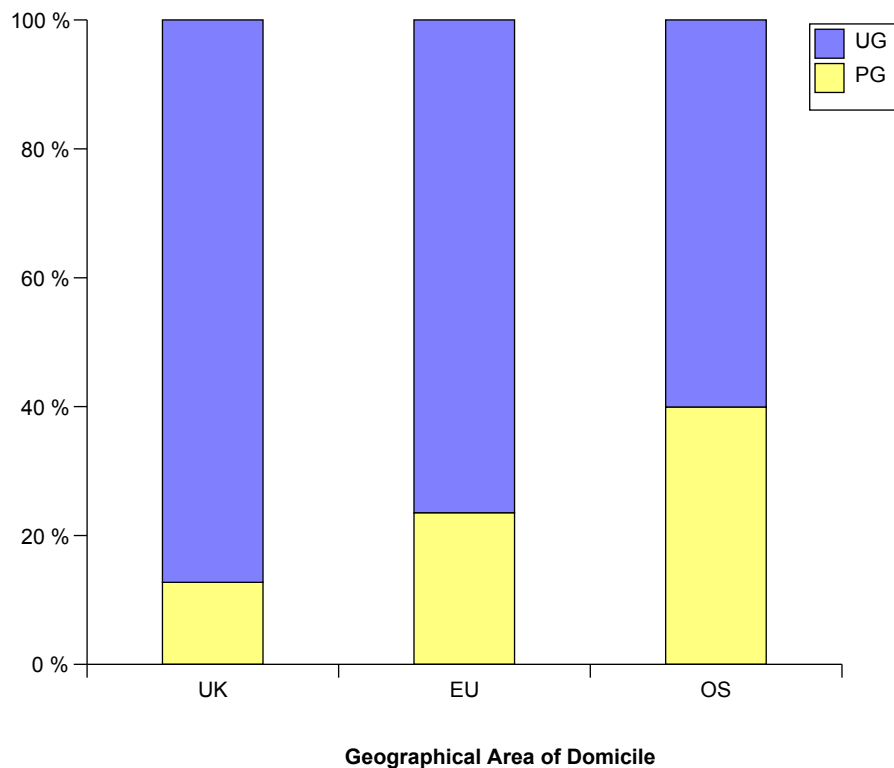
**Geographical Area of Domicile**

Level	UK	EU	OS	Grand Total
<b>PG</b>	2,447	321	877	<b>3,645</b>
<b>UG</b>	16,775	1,043	1,319	<b>19,137</b>
<b>Grand Total</b>	<b>19,222</b>	<b>1,364</b>	<b>2,196</b>	<b>22,782</b>

**Geographical Area of Domicile**

Faculty	UK	EU	OS	Grand Total
<b>Art, Design &amp; Architecture (DE)</b>	2,601	176	374	<b>3,151</b>
<b>Arts &amp; Social Sciences (HS)</b>	5,240	373	421	<b>6,034</b>
<b>Business &amp; Law (BS)</b>	3,581	351	606	<b>4,538</b>
<b>Comp, IS &amp; Maths (CM)</b>	1,564	73	161	<b>1,798</b>
<b>Engineering (GN)</b>	1,686	130	307	<b>2,123</b>
<b>Health &amp; Social Care Sciences (KG)</b>	1,563	69	26	<b>1,658</b>
<b>Science (SC)</b>	2,987	192	301	<b>3,480</b>
<b>Grand Total</b>	<b>19,222</b>	<b>1,364</b>	<b>2,196</b>	<b>22,782</b>

**Student Numbers by Geographical Area of Domicile**



## Census Student Summary - Non-UK Domiciles - 1st December 2009

India	311	Ghana	15	Uzbekistan	4
Greece	225	Belgium	14	Algeria	3
Cyprus (European Union)	170	Hungary	14	Azerbaijan	3
China	149	Slovakia	14	British Virgin Islands	3
Ireland	149	South Africa	14	Croatia	3
Norway	138	Vietnam	14	Ecuador	3
Korea (South)	130	Finland	13	Guyana	3
Germany	105	Malta	13	Libyan AR	3
Hong Kong	94	Albania	12	Macao	3
United States of America	92	Egypt	12	Malawi	3
Iran	85	Qatar	12	Montserrat	3
Sri Lanka	82	Afghanistan	11	Seychelles	3
Pakistan	80	Czech Republic	11	St Vincent	3
Nigeria	78	Kazakhstan	11	Ukraine	3
Poland	70	Indonesia	10	Belarus	2
United Arab Emirates	70	Iraq	10	Benin	2
France	67	Brazil	9	Bolivia	2
Italy	61	Lebanon	9	Botswana	2
Bulgaria	60	Zimbabwe	9	Chile	2
Thailand	58	Barbados	8	Cyprus (Non-European Union)	2
Turkey	58	Estonia	8	Georgia	2
Lithuania	54	Angola	7	Grenada	2
Spain	50	Colombia	7	Kyrgyzstan	2
Sweden	50	Luxembourg	7	Montenegro	2
Portugal	48	Oman	7	Mozambique	2
Russia	46	Serbia	7	Netherlands Antilles	2
Saudi Arabia	44	Sierra Leone	7	Not Known	2
Romania	39	Somalia	7	Palestine	2
Taiwan	34	Israel	6	St Lucia	2
Gibraltar	33	Kuwait	6	Sudan	2
Japan	33	Maldives Islands	6	Turkmenistan	2
Canada	32	Mexico	6	Antigua and Barbuda	1
Mauritius	32	Syria	6	Armenia	1
Netherlands	32	Tanzania	6	Bahamas	1
Malaysia	27	Brunei	5	Belize	1
Austria	24	Morocco	5	Bosnia and Herzegovina	1
Bangladesh	24	Australia	4	British Antarctic Territory	1
Jordan	23	Bahrain	4	Burkina Faso	1
Bermuda	20	Burma	4	Cayman Islands	1
Latvia	19	Iceland	4	Dominican Republic	1
Kenya	18	Jamaica	4	Equatorial Guinea	1
Denmark	16	Peru	4	Eritrea	1
Nepal	16	Philippines	4	Ethiopia	1
Switzerland	16	Singapore	4	European Union, not otherwise specified	1
Uganda	16	Trinidad and Tobago	4	Falkland Islands	1



**Census Student Summary - Non-UK Domiciles - 1st December 2009**

French Polynesia	1
Gambia	1
Guinea	1
Lesotho	1
Macedonia	1
Moldova	1
Mongolia	1
Nicaragua	1
Niger	1
Rwanda	1
Senegal	1
Slovenia	1
St. Kitts-Nevis	1
Tunisia	1
Turks and Caicos Islands	1
Venezuela	1
Zambia	1
<b>Grand Total</b>	<b>3,560</b>