

**KINGSTON UNIVERSITY STUDENT NUMBERS
01 December 2007 Census - 2007/8 Academic Year**

The attached pages provide a summary profile of Kingston University's student population from the 01 December 2007 Census - the traditional Higher Education census date.

The Census data is extracted from the University Student Records System and corresponds to the HEFCE Higher Education Students' Early Statistics (HESES) Survey census date.

Students excluded: Dormant students; Students studying for the whole of their programme overseas; Incoming exchange students; Affiliated students; Students who left the institution before 01 December 2007; Students who start in 2007/8 but after 01 December 2007.

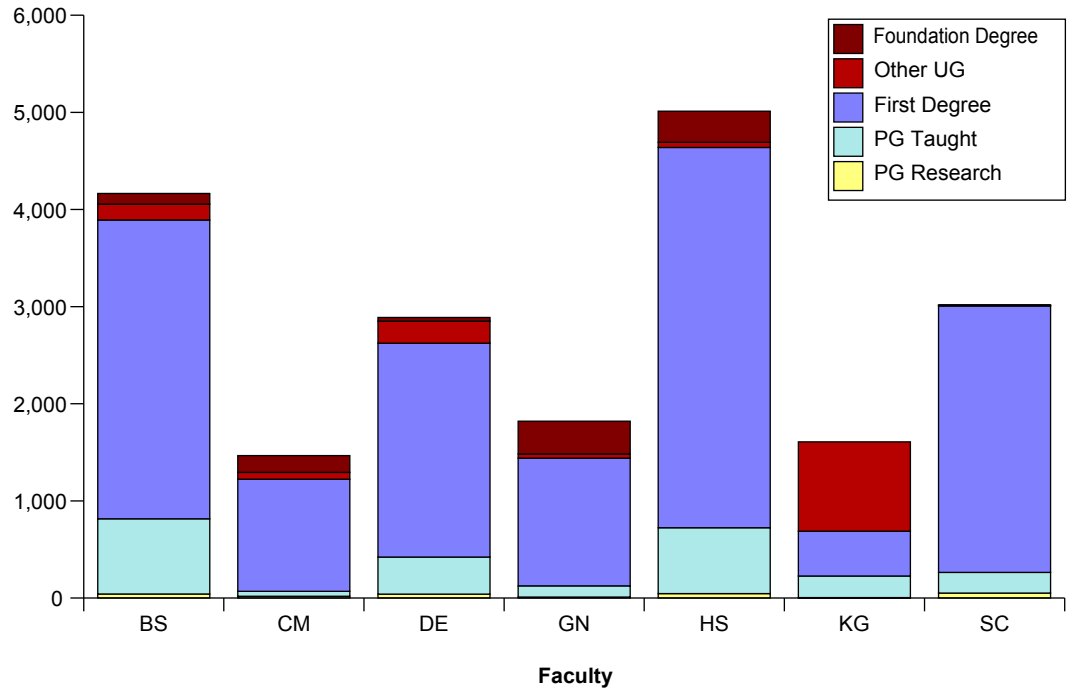
Page 2	Level & Mode by Faculty
Page 3	Summary Level & Mode; Gender by Faculty
Page 4	New Entrants by Level & Faculty
Page 5	Age on Entry
Page 6	Ethnicity
Page 7	Disability
Page 8/9	Fee Status
Page 10	Main University Sites
Page 11	UK Study Locations
Page 12	Geographical Area of Permanent Domicile
Page 13	Overseas Students Permanent Domicile

Census Student Summary - Level & Mode by Faculty

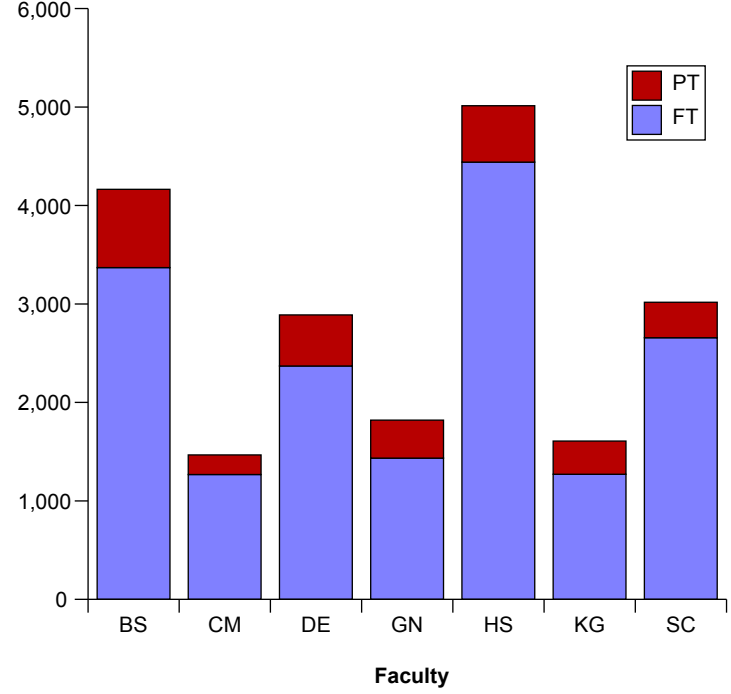
Faculty	Level of Study					Grand Total
	Foundation Degree	Other UG	First Degree	PG Taught	PG Research	
Art, Design & Architecture (DE)	39	226	2,202	382	40	2,889
Arts & Social Sciences (HS)	320	54	3,915	678	46	5,013
Business & Law (BS)	110	163	3,076	774	42	4,165
Comp, IS & Maths (CM)	173	70	1,154	51	19	1,467
Engineering (GN)	338	43	1,315	115	10	1,821
Health & Social Care Sciences (KG)	-	920	461	222	5	1,608
Science (SC)	6	4	2,744	213	51	3,018
Grand Total	986	1,480	14,867	2,435	213	19,981

Faculty	Mode		Grand Total
	FT	PT	
Art, Design & Architecture (DE)	2,371	518	2,889
Arts & Social Sciences (HS)	4,441	572	5,013
Business & Law (BS)	3,370	795	4,165
Comp, IS & Maths (CM)	1,268	199	1,467
Engineering (GN)	1,435	386	1,821
Health & Social Care Sciences (KG)	1,271	337	1,608
Science (SC)	2,657	361	3,018
Grand Total	16,813	3,168	19,981

01 Dec 2007 Student Numbers by Level



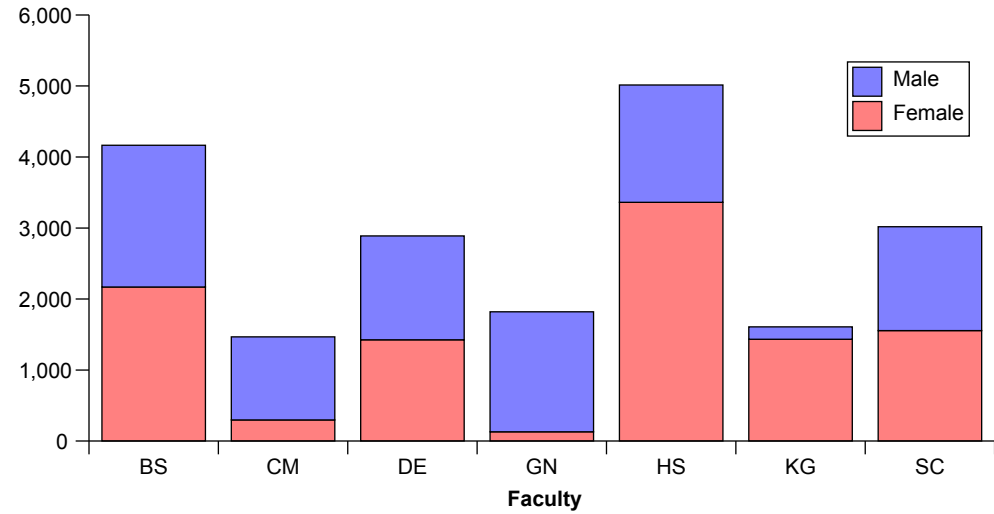
01 Dec 2007 Student Numbers by Mode



Census Student Summary - Gender, Level & Mode

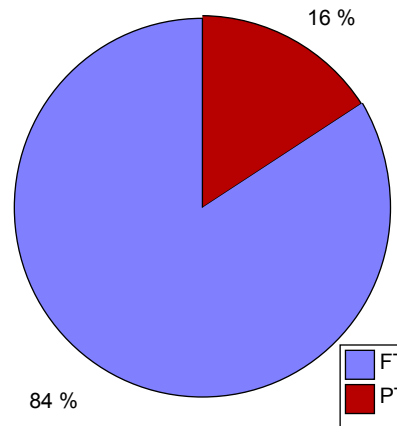
Gender			
Faculty	Female	Male	Grand Total
Art, Design & Architecture (DE)	1,426	1,463	2,889
Arts & Social Sciences (HS)	3,362	1,651	5,013
Business & Law (BS)	2,170	1,995	4,165
Comp, IS & Maths (CM)	298	1,169	1,467
Engineering (GN)	131	1,690	1,821
Health & Social Care Sciences (KG)	1,434	174	1,608
Science (SC)	1,555	1,463	3,018
Grand Total	10,376	9,605	19,981

01 Dec 2007 Student Numbers by Gender

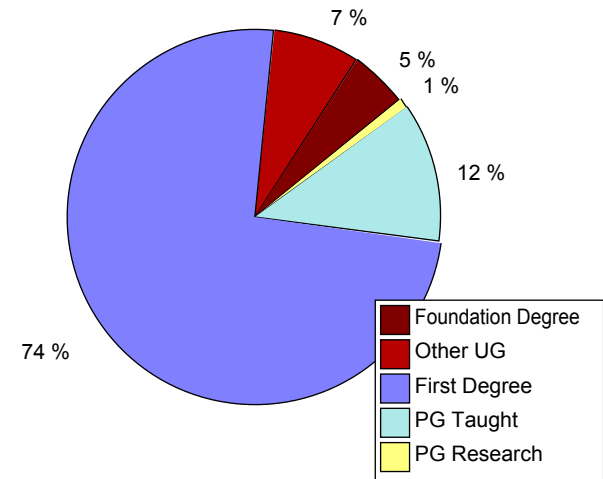


Mode			
Level	FT	PT	Grand Total
Foundation Degree	910	76	986
Other UG	1,381	99	1,480
First Degree	13,217	1,650	14,867
PG Taught	1,225	1,210	2,435
PG Research	80	133	213
Grand Total	16,813	3,168	19,981

01 Dec 2007 Student Numbers by Mode



01 Dec 2007 Student Numbers by Level

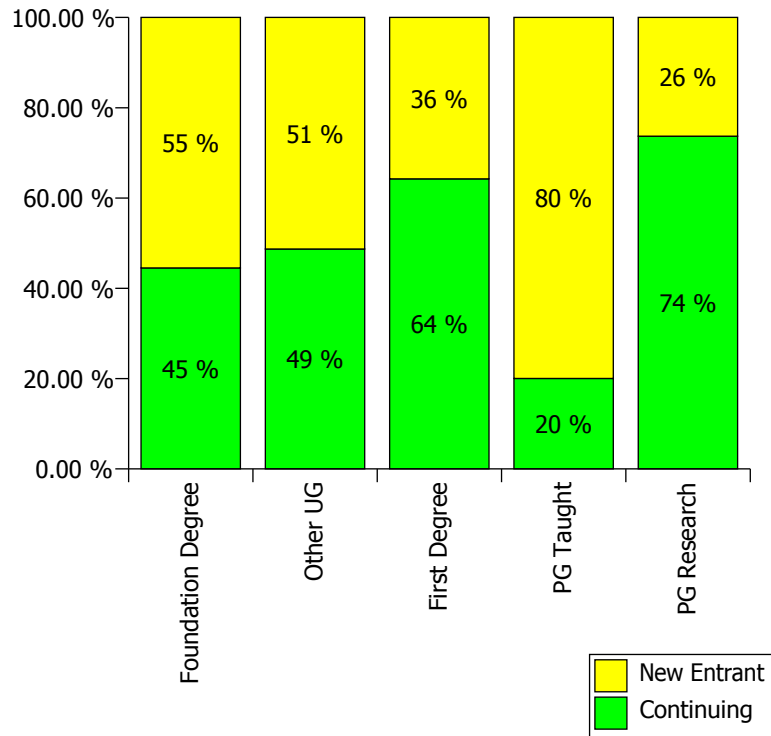


Census Student Summary - New Entrants by Level & Faculty

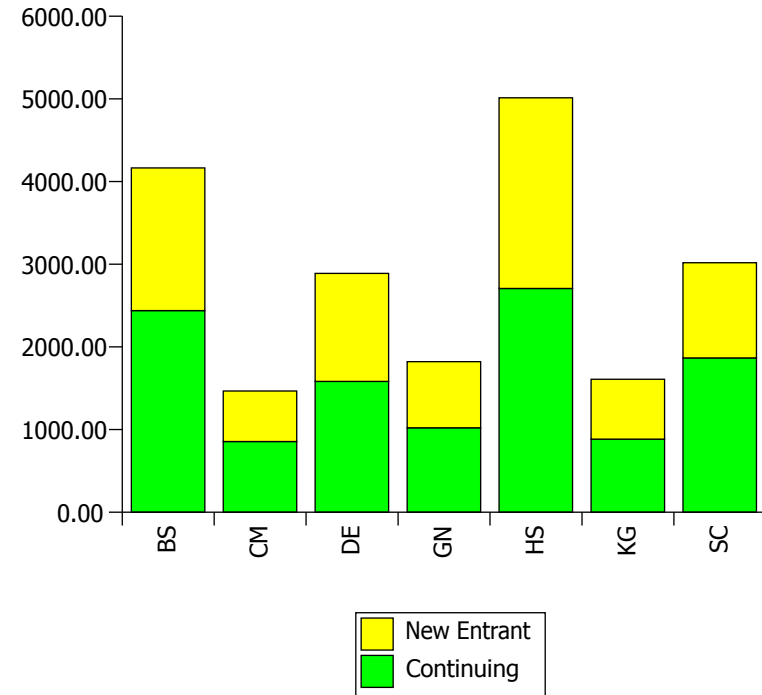
Faculty	Level of Study					Grand Total
	Foundation Degree	Other UG	First Degree	PG Taught	PG Research	
Continuing	439	721	9,551	488	157	11,356
New Entrant	547	759	5,316	1,947	56	8,625
Grand Total	986	1,480	14,867	2,435	213	19,981

Faculty	New Entrants		Grand Total
	Continuing	New Entrant	
Art, Design & Architecture (DE)	1,582	1,307	2,889
Arts & Social Sciences (HS)	2,707	2,306	5,013
Business & Law (BS)	2,439	1,726	4,165
Comp, IS & Maths (CM)	856	611	1,467
Engineering (GN)	1,021	800	1,821
Health & Social Care Sciences (KG)	885	723	1,608
Science (SC)	1,866	1,152	3,018
Grand Total	11,356	8,625	19,981

01 Dec 2007 New Entrants by Level

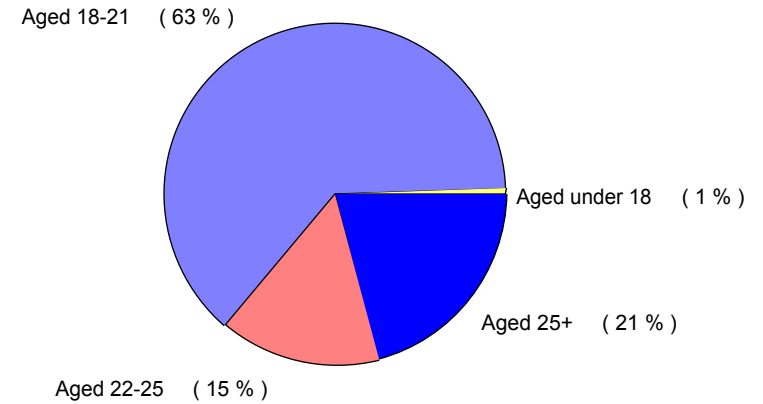


01 Dec 2007 New Entrants

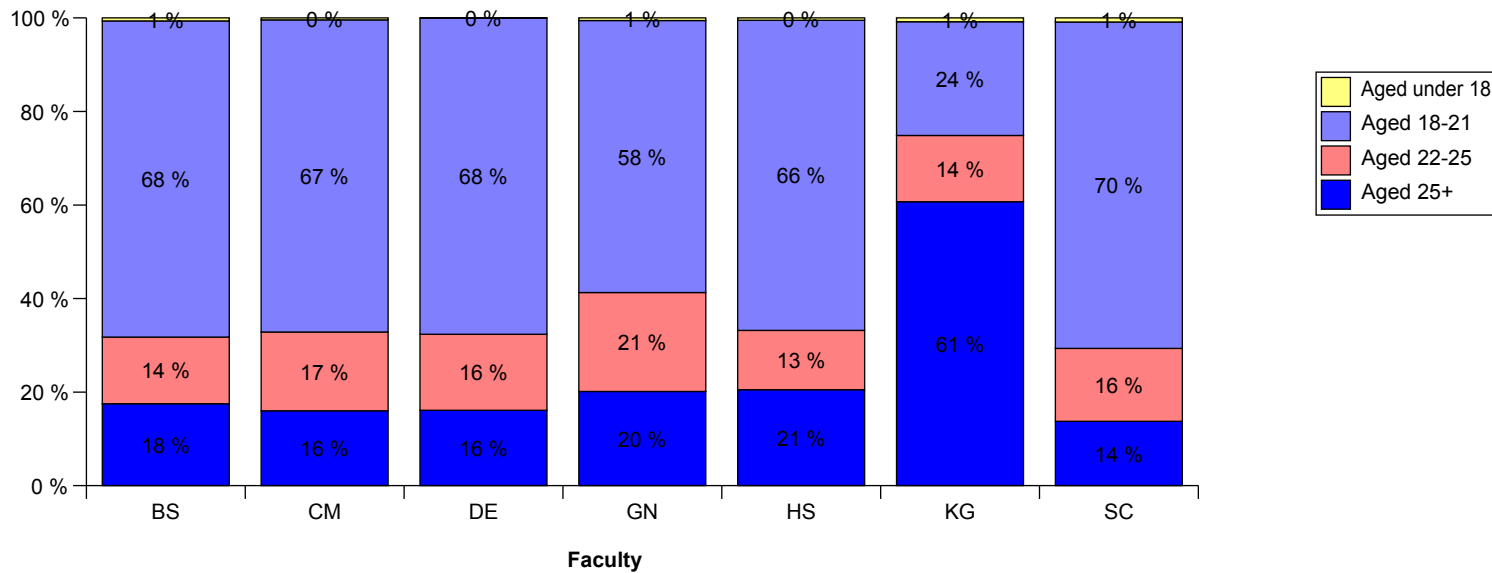


Census Student Summary - Age on Entry Profile

Faculty	Age on Entry				Grand Total
	Aged under 18	Aged 18-21	Aged 22-25	Aged 25+	
Art, Design & Architecture (DE)	2	1,952	469	466	2,889
Arts & Social Sciences (HS)	25	3,324	636	1,028	5,013
Business & Law (BS)	27	2,815	593	730	4,165
Comp, IS & Maths (CM)	6	979	247	235	1,467
Engineering (GN)	10	1,059	385	367	1,821
Health & Social Care Sciences (KG)	13	391	228	976	1,608
Science (SC)	26	2,106	471	415	3,018
Grand Total	109	12,626	3,029	4,217	19,981



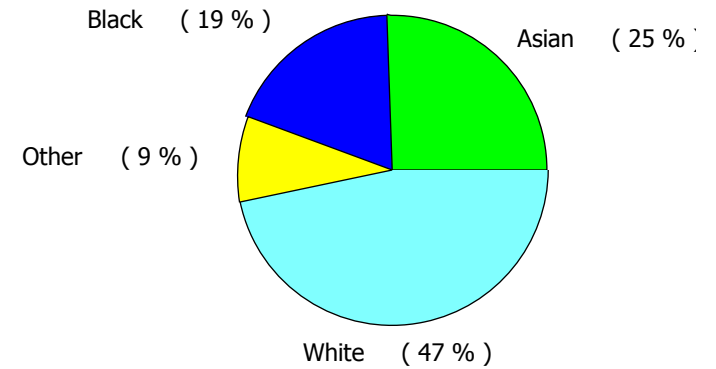
01 Dec 2007 Student Numbers by Age on Entry



Census Student Summary - Ethnicity Profile

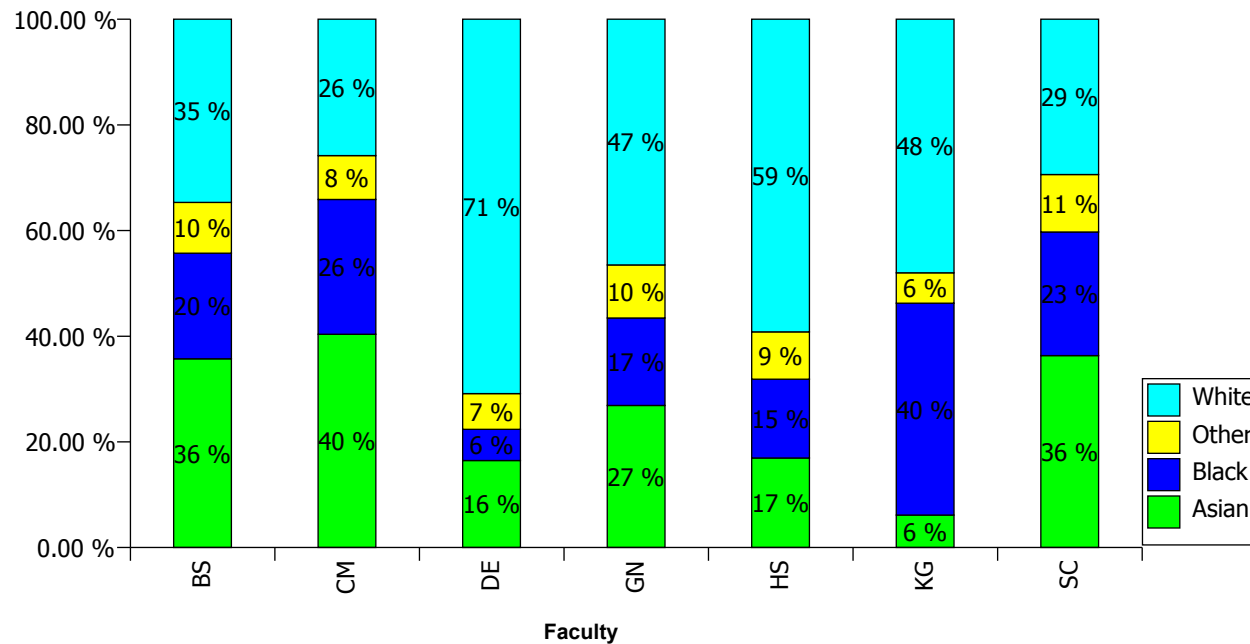
Faculty	Asian	Black	Other	Refused	White	Grand Total
Art, Design & Architecture (DE)	435	156	179	247	1,872	2,889
Arts & Social Sciences (HS)	791	696	419	345	2,762	5,013
Business & Law (BS)	1,330	744	358	443	1,290	4,165
Comp, IS & Maths (CM)	549	347	113	107	351	1,467
Engineering (GN)	439	270	164	189	759	1,821
Health & Social Care Sciences (KG)	96	626	90	47	749	1,608
Science (SC)	1,011	651	303	235	818	3,018
Grand Total	4,651	3,490	1,626	1,613	8,601	19,981

Overall University Ethnicity Profile (where available)



01 Dec 2007 Student Numbers by Ethnicity

Ethnicity Profile (where available)



Census Student Summary - Disability Profile

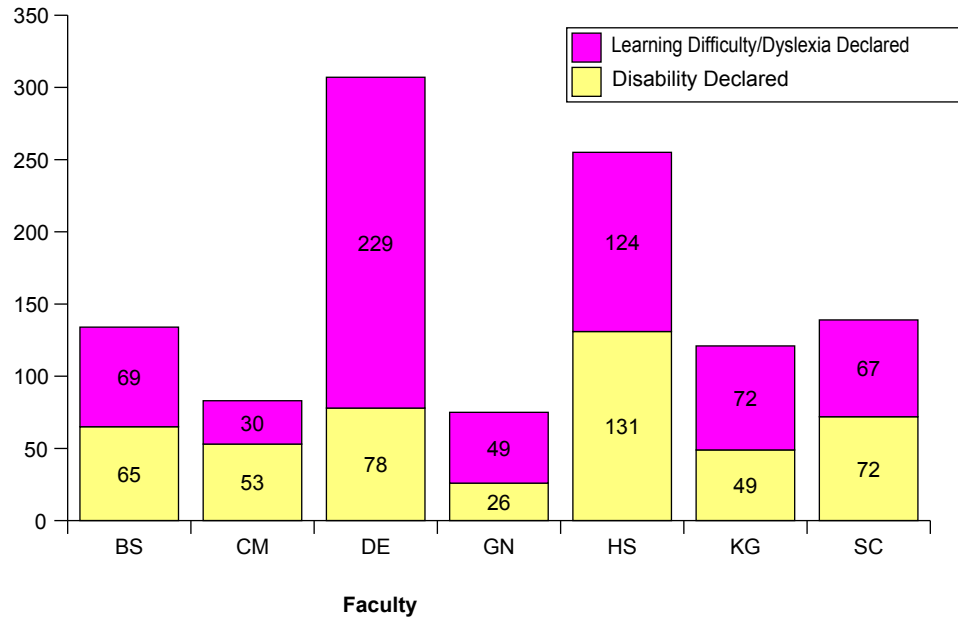
Disability Profile

Faculty	Disability Declared	Learning Difficulty/Dyslexia Declared	Grand Total
Art, Design & Architecture (DE)	78	229	307
Arts & Social Sciences (HS)	131	124	255
Business & Law (BS)	65	69	134
Comp, IS & Maths (CM)	53	30	83
Engineering (GN)	26	49	75
Health & Social Care Sciences (KG)	49	72	121
Science (SC)	72	67	139
Grand Total	474	640	1,114

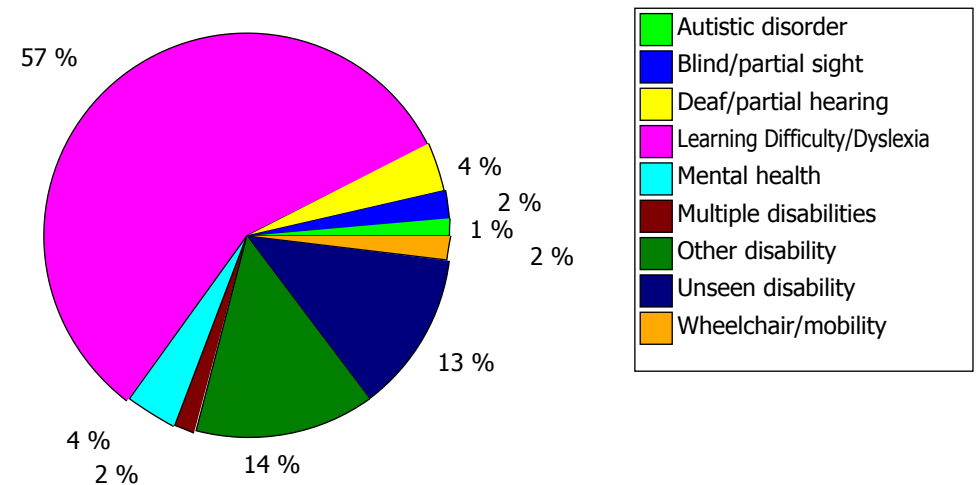
Disability Profile (declared only)

Disability	Total
Autistic disorder	13
Blind/partial sight	25
Deaf/partial hearing	45
Learning Difficulty/Dyslexia	640
Mental health	47
Multiple disabilities	19
Other disability	159
Unseen disability	143
Wheelchair/mobility	23
	1,114

01 Dec 2007 Student Numbers - Declared Disabilities



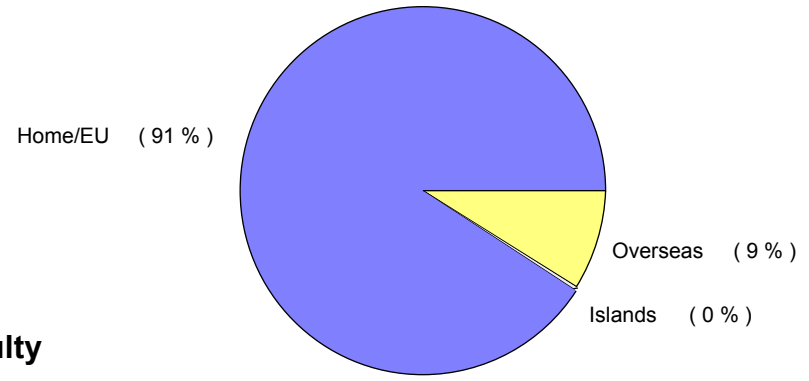
01 Dec 2007 Declared Disabilities Proportion



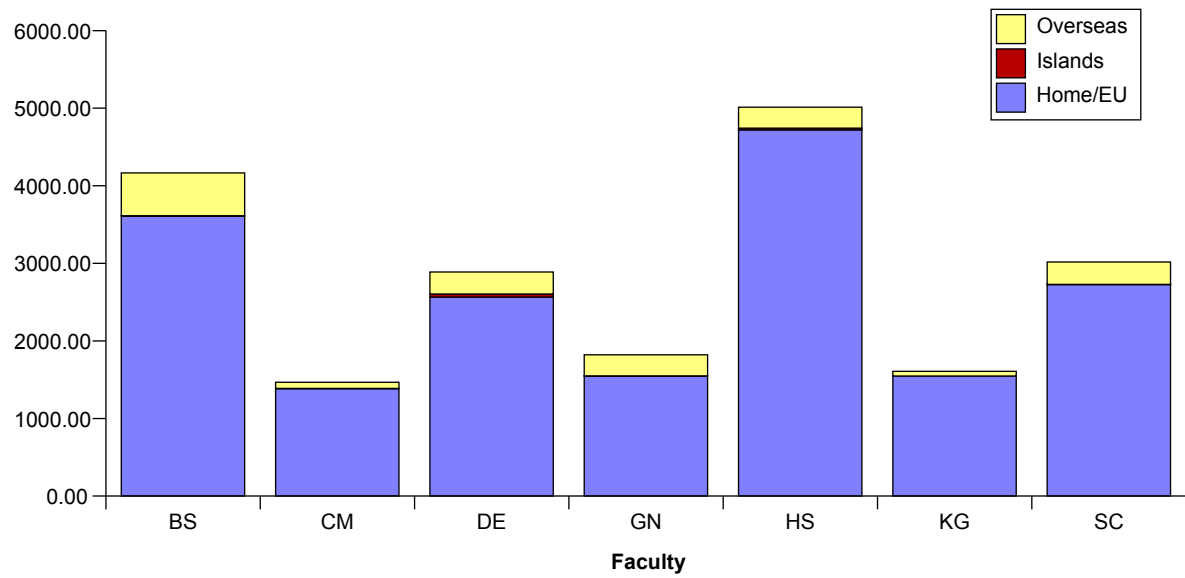
Census Student Summary - Fee Status Profile

Fee Status				
Faculty	Home/EU	Islands	Overseas	Grand Total
Art, Design & Architecture (DE)	2,566	38	285	2,889
Arts & Social Sciences (HS)	4,721	21	271	5,013
Business & Law (BS)	3,609	5	551	4,165
Comp, IS & Maths (CM)	1,385	2	80	1,467
Engineering (GN)	1,547	2	272	1,821
Health & Social Care Sciences (KG)	1,548	-	60	1,608
Science (SC)	2,726	2	290	3,018
Grand Total	18,102	70	1,809	19,981

01 Dec 2007 Student Numbers by Fee Status



01 Dec 2007 Student Numbers by Fee Status and Faculty

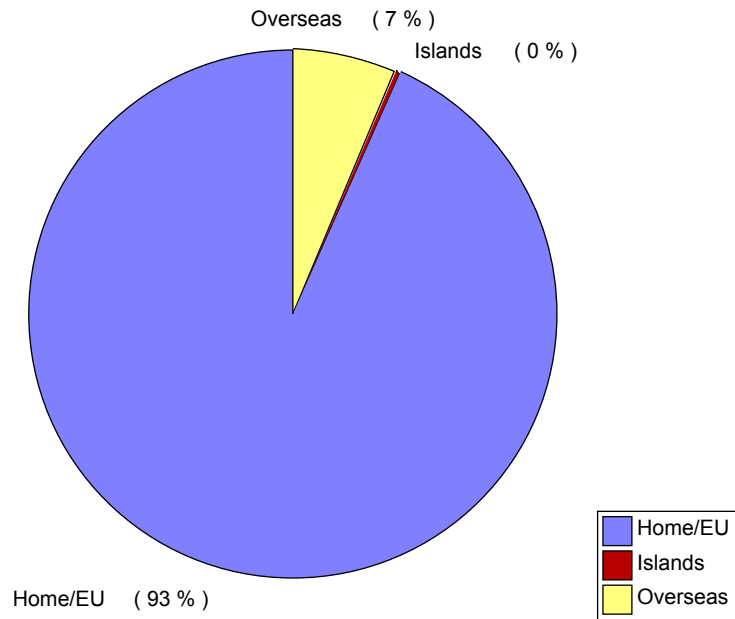


Census Student Summary - Fee Status by Level Summary

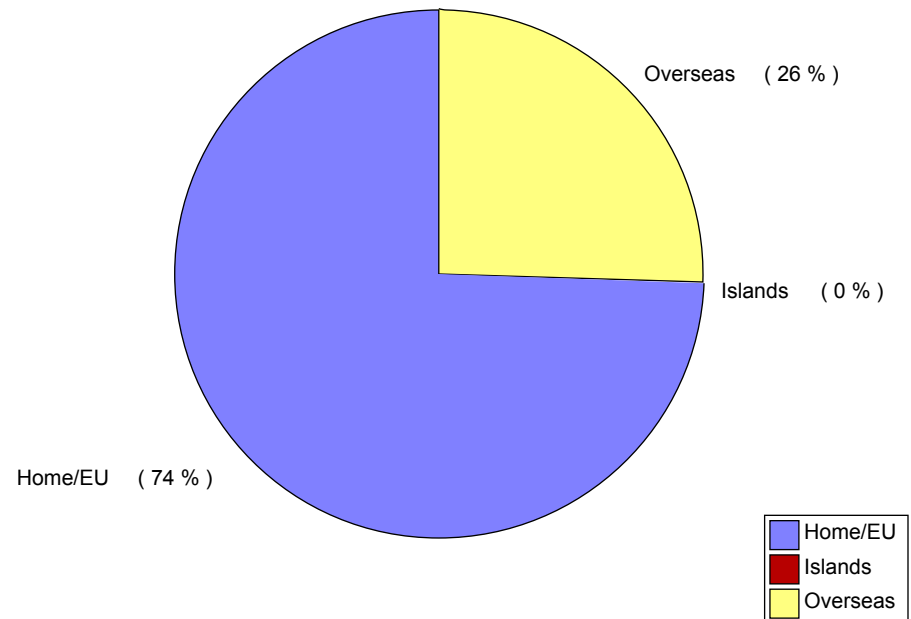
Fee Status				
Level	Home/EU	Islands	Overseas	Grand Total
PG	1,966	2	680	2,648
UG	16,136	68	1,129	17,333
Grand Total	18,102	70	1,809	19,981

Level		Home/EU	Islands	Overseas	Grand Total
PG	Continuing	523	-	122	645
PG	New Entrant	1,443	2	558	2,003
UG	Continuing	10,021	30	660	10,711
UG	New Entrant	6,115	38	469	6,622
Grand Total		18,102	70	1,809	19,981

Undergraduate Fee Status



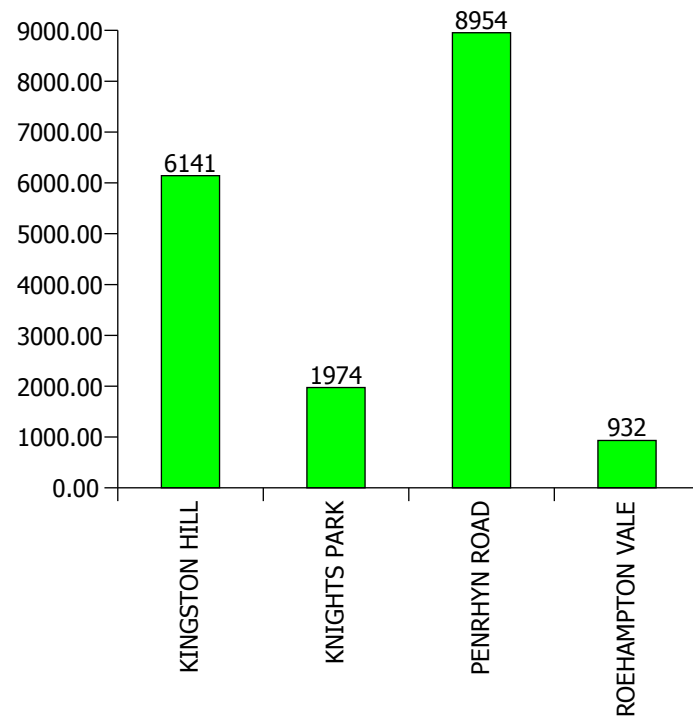
Postgraduate Fee Status



Census Student Summary - University Main Sites

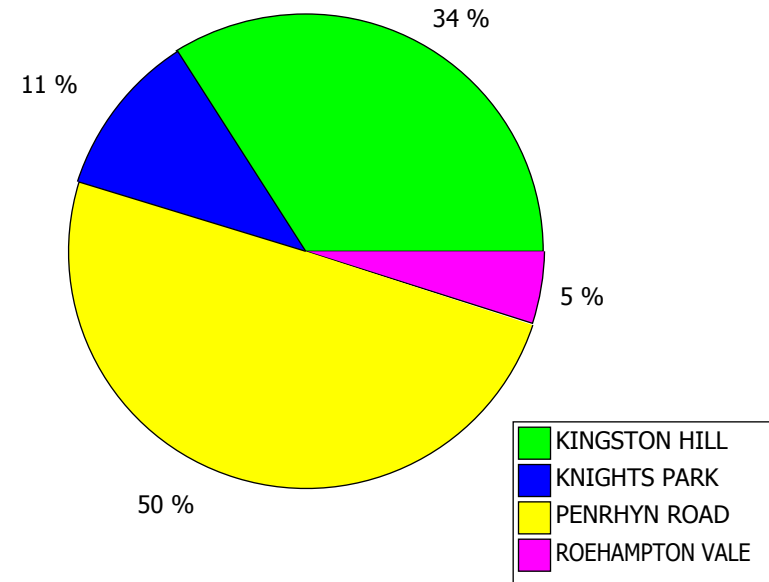
University Site	
KINGSTON HILL	6,141
KNIGHTS PARK	1,974
PENRHYN ROAD	8,954
ROEHAMPTON VALE	932
Grand Total	18,001

01 Dec 2007 Student Numbers by Site



Faculty	Kingston College	Other UK	University Sites	Grand Total
Art, Design & Architecture (DE)	-	87	2,802	2,889
Arts & Social Sciences (HS)	81	312	4,620	5,013
Business & Law (BS)	309	268	3,588	4,165
Comp, IS & Maths (CM)	168	153	1,146	1,467
Engineering (GN)	32	313	1,476	1,821
Health & Social Care Sciences (KG)	-	-	1,608	1,608
Science (SC)	251	6	2,761	3,018
Grand Total	841	1,139	18,001	19,981

01 Dec 2007 Student Numbers - Site Proportion



Census Student Summary - UK Locations

Level	Kingston College	Other UK	University Sites	Grand Total
Aborfield	-	12	-	12
BEXLEY INSET	-	9	-	9
British Airways (Heathrow Airport)	-	35	-	35
BROOKLANDS COLLEGE	-	39	-	39
CITY OF BRISTOL COLLEGE	-	70	-	70
COOMBE GIRLS SCHOOL	-	8	-	8
CRANWELL - RAF TRAINING CENTRE	-	16	-	16
DELPHI DIESEL	-	14	-	14
DESIGN MUSEUM LONDON	-	19	-	19
EASTWOOD PARK	-	15	-	15
European Pilot Training Academy	-	21	-	21
HMS Sultan	-	11	-	11
HOUNSLOW TEACHERS CENTRE	-	14	-	14
INDUSTRIAL PLACEMENT	-	32	-	32
KINGSTON COLLEGE	841	-	-	841
KINGSTON HILL	-	-	5,596	5,596
KINGSTON HILL/ST GEORGE'S	-	-	330	330
KNIGHTS PARK	-	-	1,974	1,974
LAMBETH	-	5	-	5
MERTON COLLEGE	-	45	-	45
MILLENIUM HOUSE	-	-	2	2
NESCOT	-	51	-	51
NEWCASTLE	-	87	-	87
NEWHAM COLLEGE	-	6	-	6
NEWTEC	-	35	-	35
NORWICH (KLM)	-	34	-	34
PENRHYN ROAD	-	-	9,167	9,167
POOLE	-	2	-	2
RICHMOND ADULT & COMMUNITY COLLEGE	-	23	-	23
RICHMOND COLLEGE	-	230	-	230
ROEHAMPTON VALE	-	-	932	932
SOUTH THAMES COLLEGE	-	163	-	163
SURREY TEACHERS CENTRE	-	28	-	28
The National School of Government	-	5	-	5
WEST THAMES COLLEGE	-	67	-	67
WHITEFIELDS SCHOOL	-	43	-	43
Grand Total	841	1,139	18,001	19,981

Census Student Summary - Geographical Area of Domicile

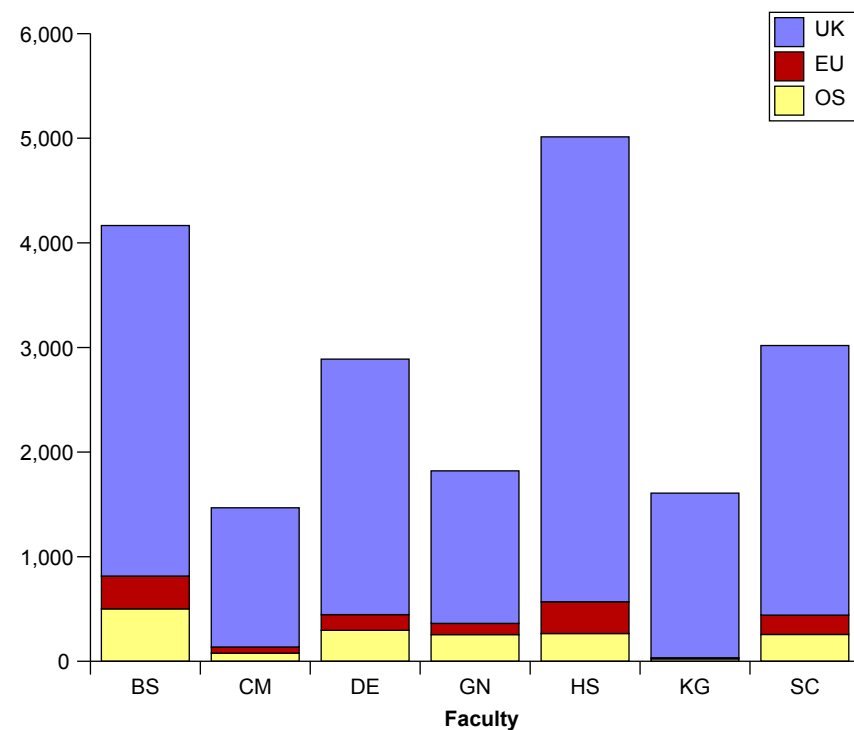
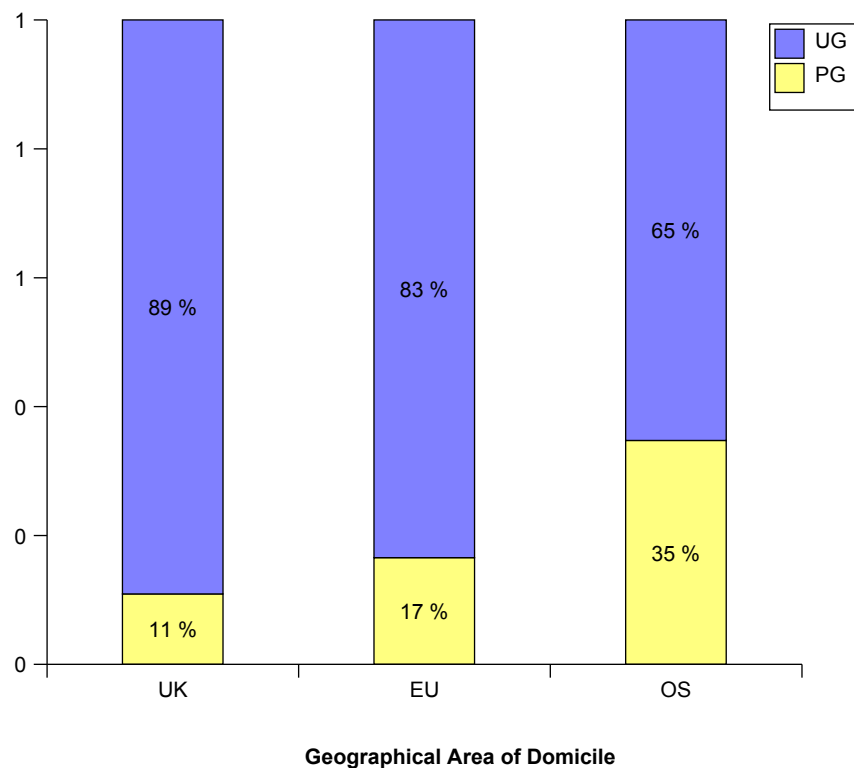
Geographical Area of Domicile

Level	UK	EU	OS	Grand Total
PG	1,878	187	583	2,648
UG	15,296	942	1,095	17,333
Grand Total	17,174	1,129	1,678	19,981

Geographical Area of Domicile

Faculty	UK	EU	OS	Grand Total
Art, Design & Architecture (DE)	2,442	151	296	2,889
Arts & Social Sciences (HS)	4,444	303	266	5,013
Business & Law (BS)	3,350	314	501	4,165
Comp, IS & Maths (CM)	1,330	59	78	1,467
Engineering (GN)	1,458	107	256	1,821
Health & Social Care Sciences (KG)	1,574	10	24	1,608
Science (SC)	2,576	185	257	3,018
Grand Total	17,174	1,129	1,678	19,981

01 Dec 2007 Student Numbers by Geographical Area of Domicile



Census Student Summary - Non-UK Domiciles

Cyprus	199	Kuwait	13	Guyana	3
India	192	Latvia	13	Iraq	3
Greece	170	The Isle of Man	13	Jamaica	3
China	122	Vietnam	13	Libyan AR	3
Korea (South)	93	Bangladesh	12	New Zealand	3
Sri Lanka	93	Denmark	12	Sierra Leone	3
Hong Kong	92	Lebanon	11	Somalia	3
Germany	88	Barbados	10	Syria	3
Pakistan	81	Luxembourg	10	Venezuela	3
France	72	Malta	10	Bahamas	2
Poland	72	Zimbabwe	10	Bahrain	2
Ireland	69	Australia	9	Cameroon	2
Nigeria	65	South Africa	9	Croatia	2
Norway	63	Estonia	8	Macao	2
Portugal	62	Slovakia	8	Seychelles	2
Sweden	62	Botswana	7	Ukraine	2
The Channel Islands	52	Egypt	7	Antigua and Barbuda	1
Japan	50	Qatar	7	Belarus	1
Thailand	50	Tanzania	7	Benin	1
Lithuania	49	Kazakhstan	6	Bolivia	1
United States of America	48	Maldives Islands	6	Bosnia and Herzegovina	1
Iran	47	Nepal	6	Burkina Faso	1
Italy	41	Trinidad and Tobago	6	Chile	1
United Arab Emirates	40	Afghanistan	5	Dominica	1
Gibraltar	38	Armenia	5	Dominican Republic	1
Spain	33	Brazil	5	Ecuador	1
Turkey	33	Colombia	5	Ethiopia	1
Russia	30	Serbia	5	Georgia	1
Netherlands	29	Singapore	5	Ivory Coast	1
Jordan	27	Sudan	5	Korea DRY (North)	1
Mauritius	25	Albania	4	Leeward Islands (not otherwise specified)	1
Belgium	23	Angola	4	Liberia	1
Canada	22	Azerbaijan	4	Moldova	1
Kenya	21	Burma	4	Mongolia	1
Taiwan	21	Iceland	4	Mozambique	1
Ghana	19	Indonesia	4	Namibia	1
Saudi Arabia	19	Israel	4	Panama	1
Austria	18	Malawi	4	Peru	1
Switzerland	18	Mexico	4	St. Kitts-Nevis	1
Finland	15	Morocco	4	St Lucia	1
Uganda	15	Oman	4	US Trust Territories	1
Czech Republic	14	Philippines	4	Uzbekistan	1
Hungary	14	Zambia	4	West Indies (not otherwise specified)	1
Malaysia	14	Algeria	3		
Brunei	13	Gambia	3	Grand Total	2,807