

**KINGSTON UNIVERSITY STUDENT NUMBERS
01 December 2006 Census - 2006/7 Academic Year**

The attached pages provide a summary profile of Kingston University's student population from the 01 December 2006 Census - the traditional Higher Education census date.

The Census data is extracted from the University Student Records System and corresponds to the HEFCE Higher Education Students' Early Statistics (HESES) Survey census date.

Students excluded: Dormant students; Students studying for the whole of their programme overseas; Incoming exchange students; Affiliated students; Students who left the institution before 01 December 2006; Students who start in 2006/7 but after 01 December 2006.

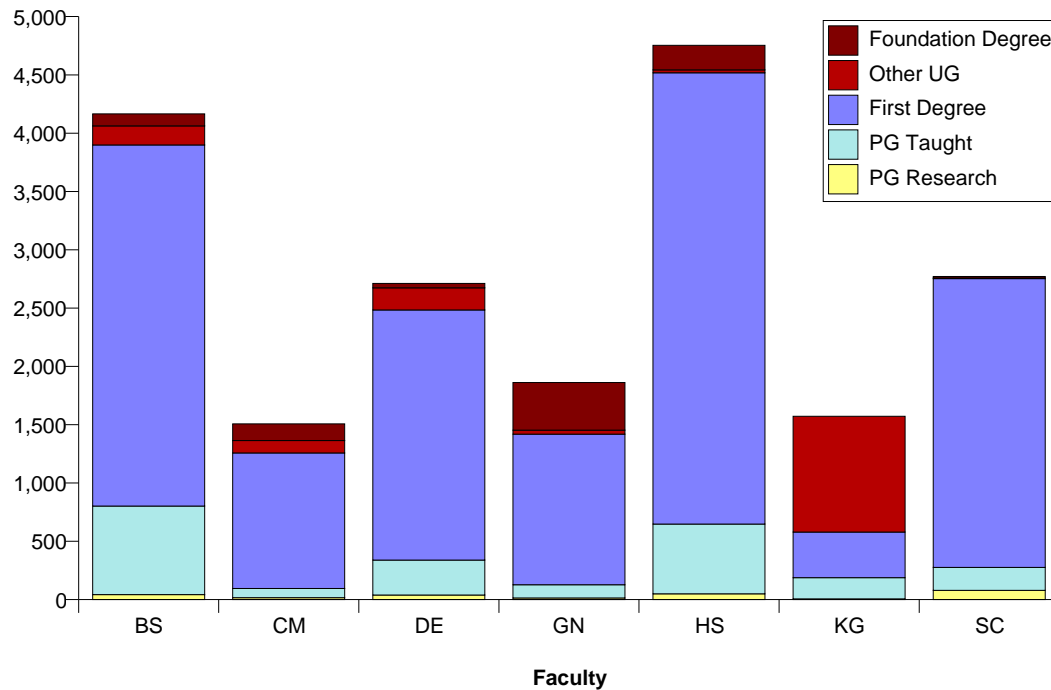
Page 2	Level & Mode by Faculty
Page 3	Summary Level & Mode; Gender by Faculty
Page 4	Age on Entry Profile
Page 5	Ethnicity Profile
Page 6	Disability Profile
Page 7/8	Fee Status Profile
Page 9	Geographical Area Profile
Page 10	Overseas Domiciles Profile

Census Student Summary - Level & Mode by Faculty/School

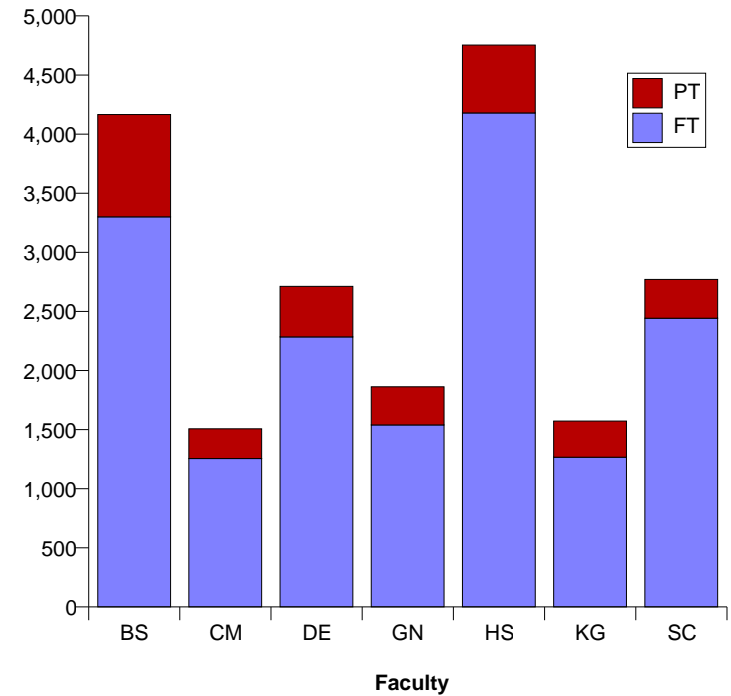
Faculty	Level of Study					Grand Total
	Foundation Degree	Other UG	First Degree	PG Taught	PG Research	
Art, Design & Architecture	38	190	2,145	299	40	2,712
Arts & Social Sciences	211	25	3,870	598	50	4,754
Business	103	163	3,097	759	43	4,165
CISM	143	106	1,162	79	17	1,507
Engineering	409	34	1,291	114	14	1,862
Health & Social Care Sciences	-	993	391	182	6	1,572
Science	13	5	2,477	197	79	2,771
Grand Total	917	1,516	14,433	2,228	249	19,343

Faculty	Mode		Grand Total
	FT	PT	
Art, Design & Architecture	2,285	427	2,712
Arts & Social Sciences	4,179	575	4,754
Business	3,300	865	4,165
CISM	1,255	252	1,507
Engineering	1,540	322	1,862
Health & Social Care Sciences	1,267	305	1,572
Science	2,442	329	2,771
Grand Total	16,268	3,075	19,343

01 Dec 2006 Student Numbers by Level



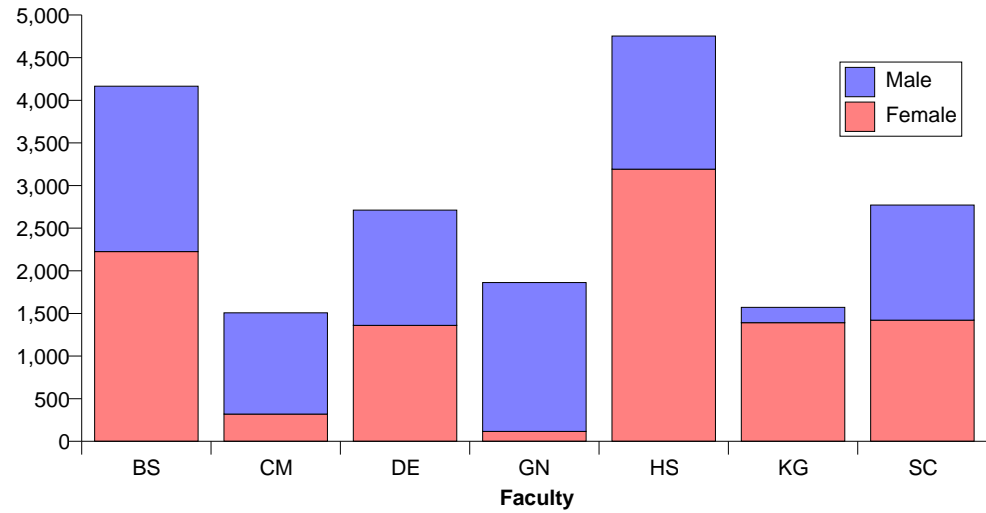
01 Dec 2006 Student Numbers by Mode



Census Student Summary - Gender, Summary Level & Mode

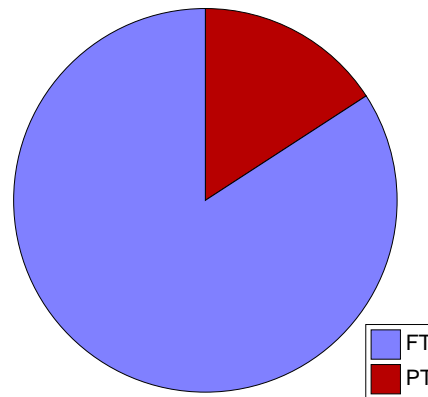
Gender			
Faculty	Female	Male	Grand Total
Art, Design & Architecture	1,361	1,351	2,712
Arts & Social Sciences	3,193	1,561	4,754
Business	2,225	1,940	4,165
CISM	320	1,187	1,507
Engineering	117	1,745	1,862
Health & Social Care Sciences	1,391	181	1,572
Science	1,422	1,349	2,771
Grand Total	10,029	9,314	19,343

01 Dec 2006 Student Numbers by Gender

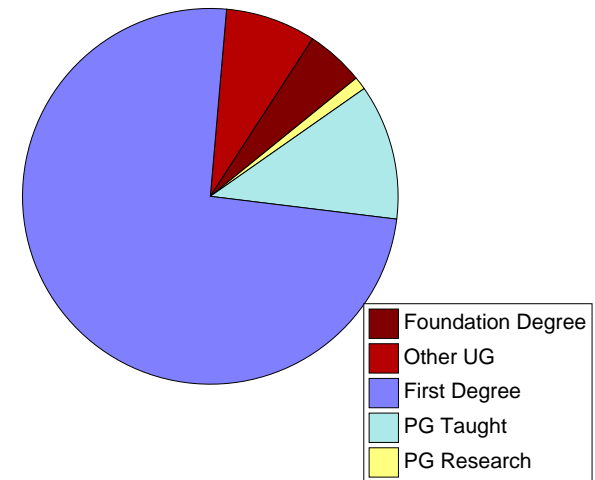


Mode			
Level	FT	PT	Grand Total
Foundation Degree	872	45	917
Other UG	1,404	112	1,516
First Degree	12,866	1,567	14,433
PG Taught	1,021	1,207	2,228
PG Research	105	144	249
Grand Total	16,268	3,075	19,343

01 Dec 2006 Student Numbers by Mode

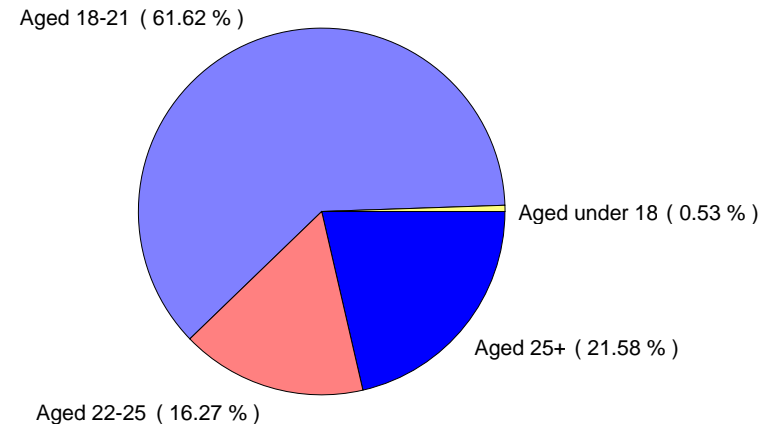


01 Dec 2006 Student Numbers by Level

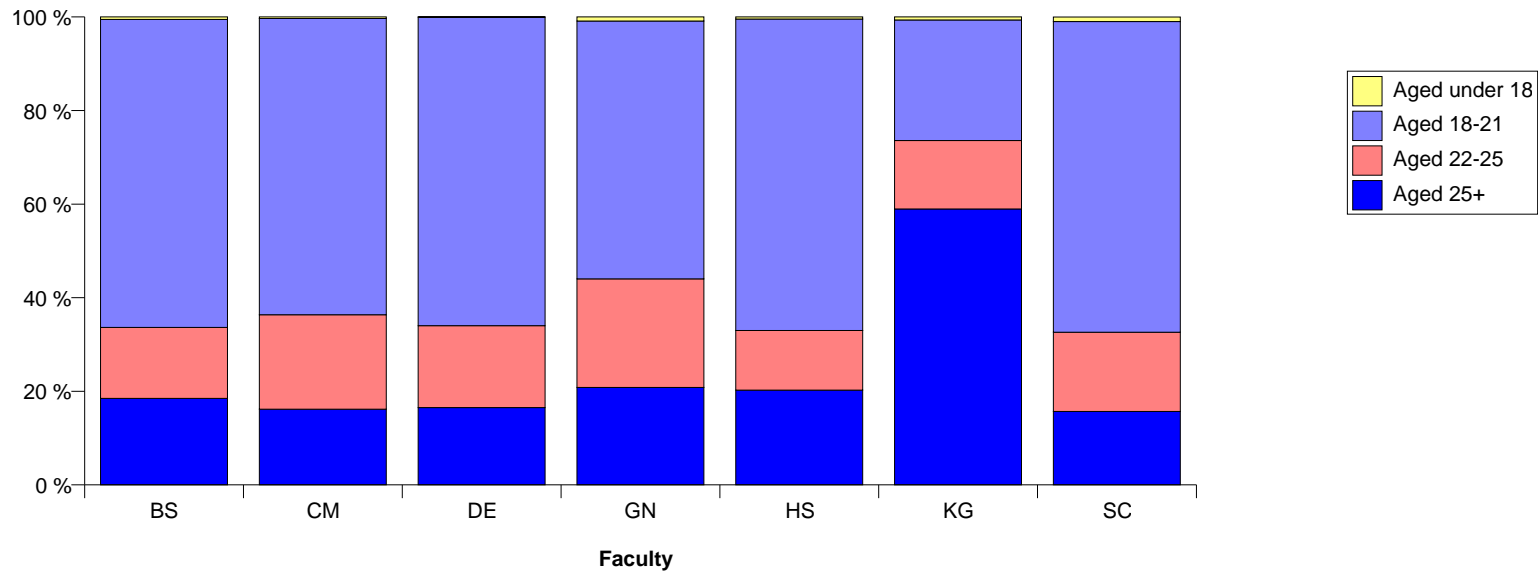


Census Student Summary - Age on Entry Profile

Faculty	Age on Entry				Grand Total
	Aged under 18	Aged 18-21	Aged 22-25	Aged 25+	
Art, Design & Architecture	1	1,788	475	448	2,712
Arts & Social Sciences	21	3,165	605	963	4,754
Business	22	2,741	632	770	4,165
CISM	5	954	304	244	1,507
Engineering	16	1,026	432	388	1,862
Health & Social Care Sciences	10	405	230	927	1,572
Science	27	1,840	469	435	2,771
Grand Total	102	11,919	3,147	4,175	19,343



01 Dec 2006 Student Numbers by Age on Entry

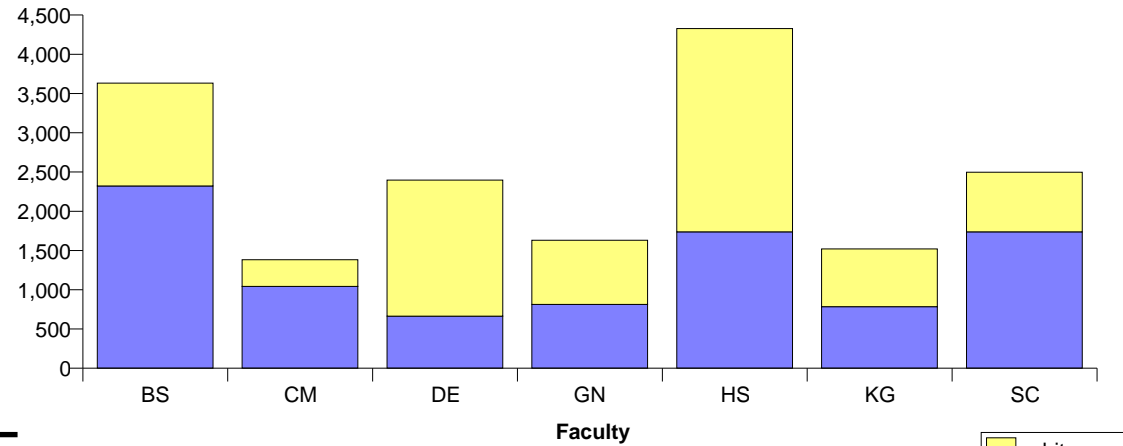


Census Student Summary - Ethnicity Profile

Ethnicity Profile (where available)

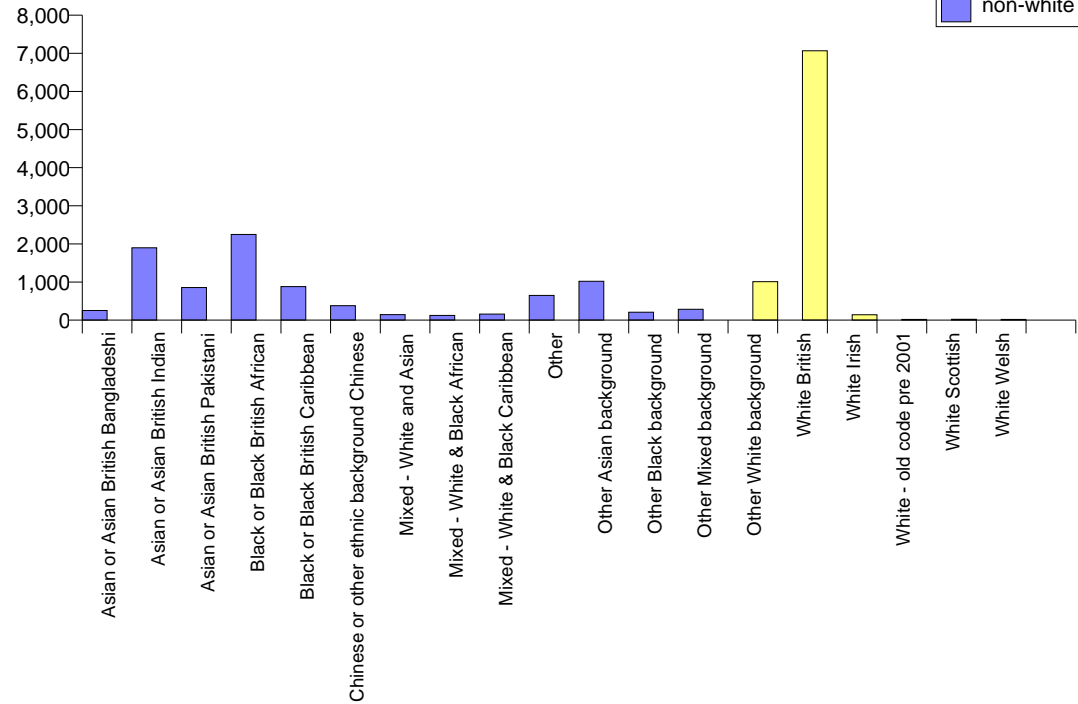
Faculty	non-white	white	Grand Total
Art, Design & Architecture	663	1,734	2,397
Arts & Social Sciences	1,738	2,590	4,328
Business	2,323	1,309	3,632
CISM	1,043	340	1,383
Engineering	813	818	1,631
Health & Social Care Sciences	784	736	1,520
Science	1,738	759	2,497
Grand Total	9,102	8,286	17,388

01 Dec 2006 Student Numbers by Ethnicity



Ethnicity Profile (where available)

Ethnicity	non-white	white	Grand Total
Asian or Asian British Bangladeshi	254	-	254
Asian or Asian British Indian	1,897	-	1,897
Asian or Asian British Pakistani	854	-	854
Black or Black British African	2,248	-	2,248
Black or Black British Caribbean	879	-	879
Chinese or other ethnic background Chinese	378	-	378
Mixed - White and Asian	145	-	145
Mixed - White & Black African	123	-	123
Mixed - White & Black Caribbean	159	-	159
Other	650	-	650
Other Asian background	1,021	-	1,021
Other Black background	208	-	208
Other Mixed background	286	-	286
Other White background	-	1,011	1,011
White British	-	7,068	7,068
White Irish	-	143	143
White - old code pre 2001	-	20	20
White Scottish	-	23	23
White Welsh	-	20	20
	-	1	1
Grand Total	9,102	8,286	17,388



Census Student Summary - Disability Profile

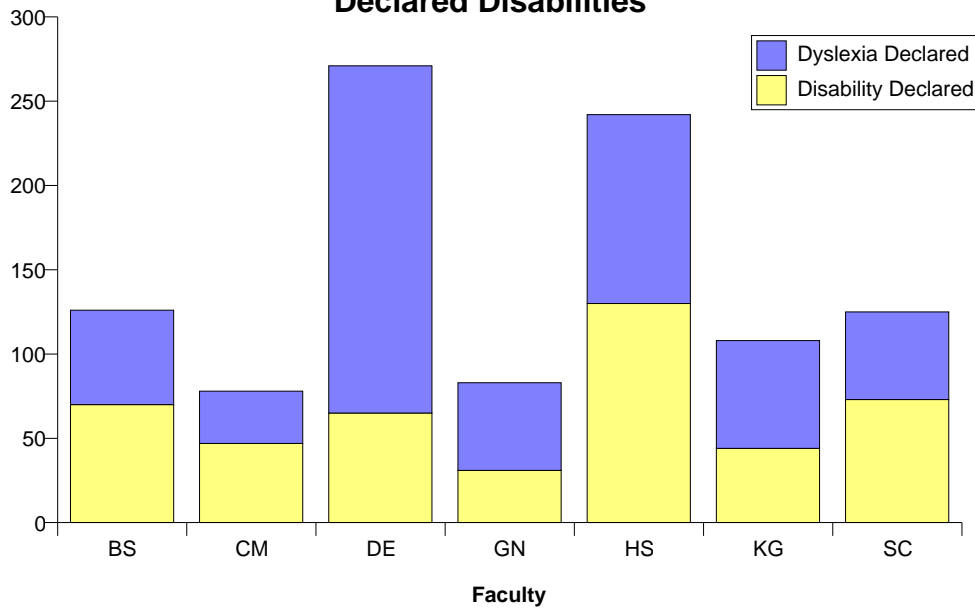
Disability Profile

Faculty	Disability Declared	Dyslexia Declared	No Known Disability	Grand Total
Art, Design & Architecture	65	206	2,441	2,712
Arts & Social Sciences	130	112	4,512	4,754
Business	70	56	4,039	4,165
CISM	47	31	1,429	1,507
Engineering	31	52	1,779	1,862
Health & Social Care Sciences	44	64	1,464	1,572
Science	73	52	2,646	2,771
Grand Total	460	573	18,310	19,343

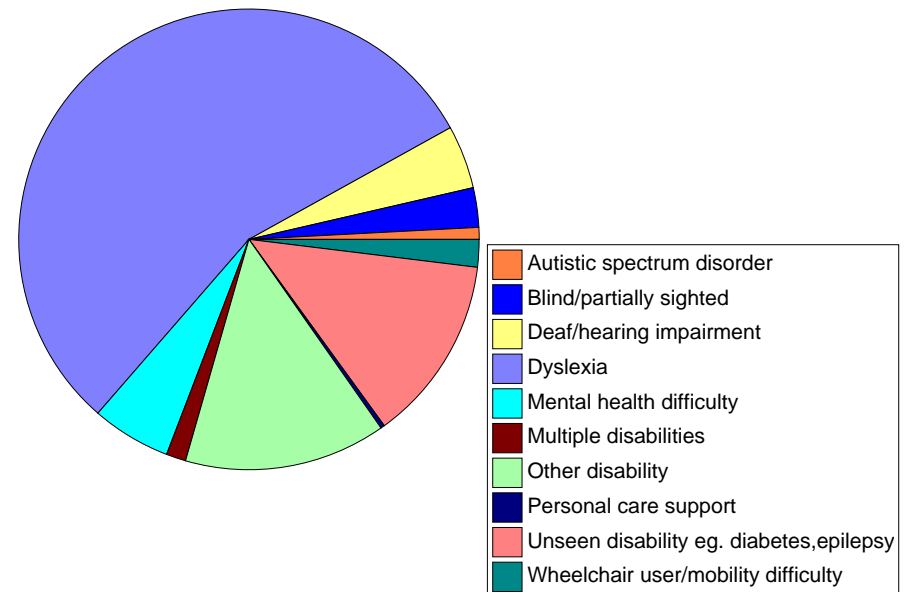
Disability Profile (declared only)

Disability	Total
Autistic spectrum disorder	7
Blind/partially sighted	29
Deaf/hearing impairment	47
Dyslexia	573
Mental health difficulty	56
Multiple disabilities	15
Other disability	147
Personal care support	3
Unseen disability eg. diabetes,epilepsy	135
Wheelchair user/mobility difficulty	21
Grand Total	1,033

Declared Disabilities



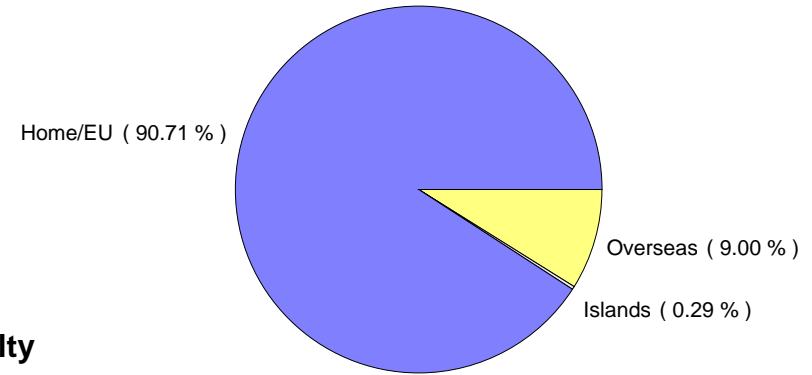
Declared Disabilities



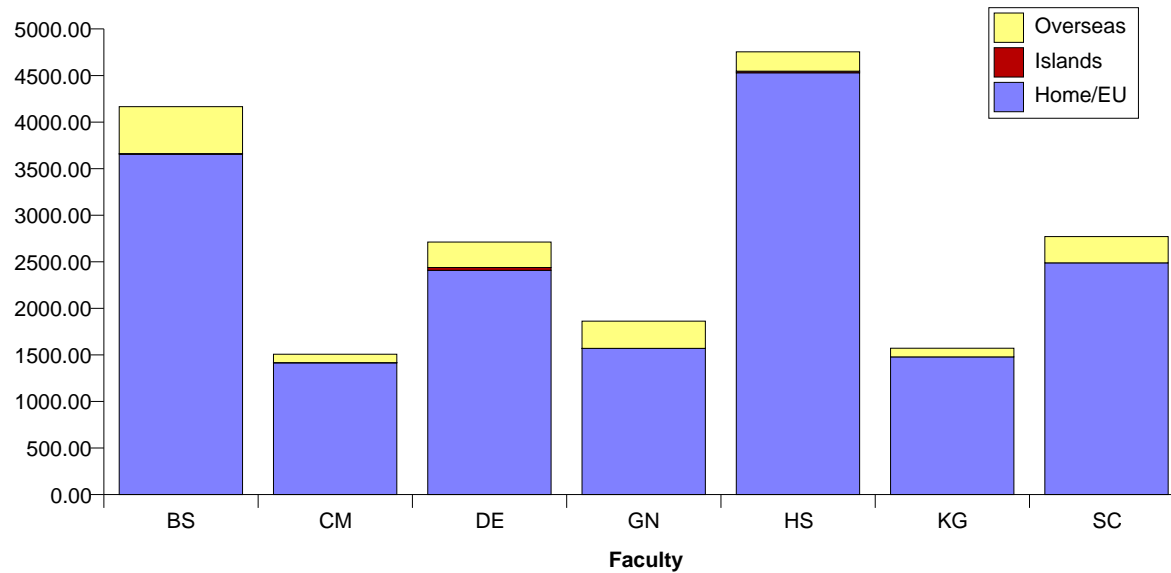
Census Student Summary - Fee Status Profile

Fee Status				
Faculty	Home/EU	Islands	Overseas	Grand Total
Art, Design & Architecture	2,408	30	274	2,712
Arts & Social Sciences	4,530	16	208	4,754
Business	3,656	6	503	4,165
CISM	1,416	1	90	1,507
Engineering	1,569	2	291	1,862
Health & Social Care Sciences	1,479	-	93	1,572
Science	2,488	1	282	2,771
Grand Total	17,546	56	1,741	19,343

01 Dec 2006 Student Numbers by Fee Status



01 Dec 2006 Student Numbers by Fee Status and Faculty

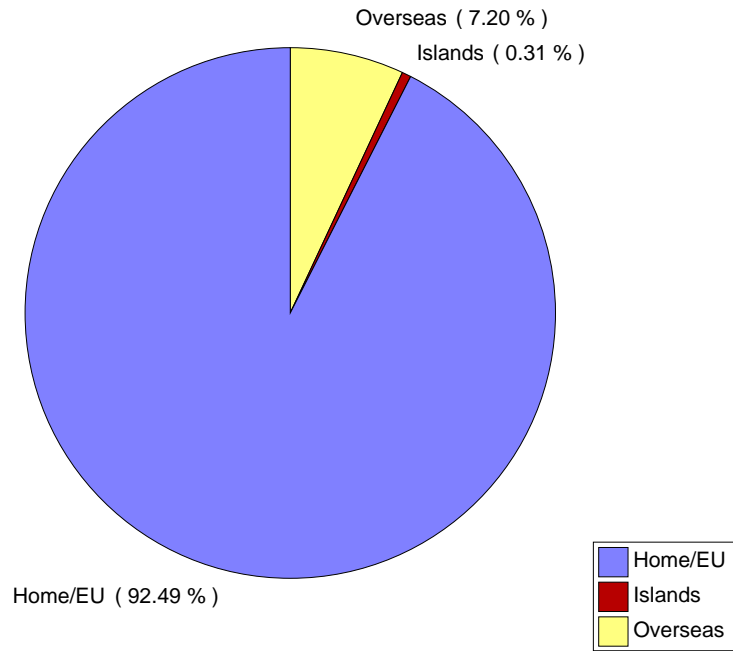


Census Student Summary - Fee Status by Level Summary

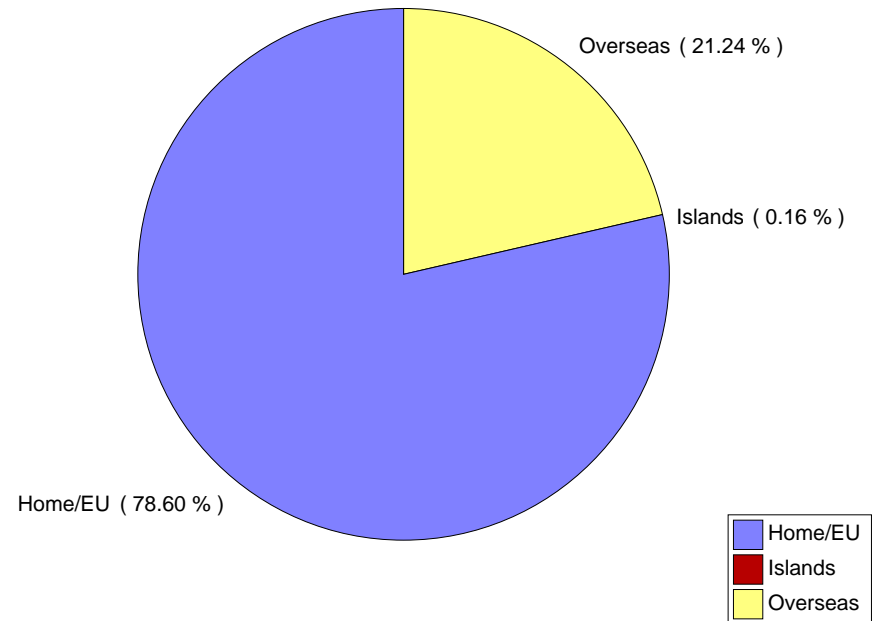
Fee Status

Level	Home/EU	Islands	Overseas	Grand Total
PG	1,947	4	526	2,477
UG	15,599	52	1,215	16,866
Grand Total	17,546	56	1,741	19,343

Undergraduate Fee Status



Postgraduate Fee Status



Census Student Summary - Geographical Area of Domicile

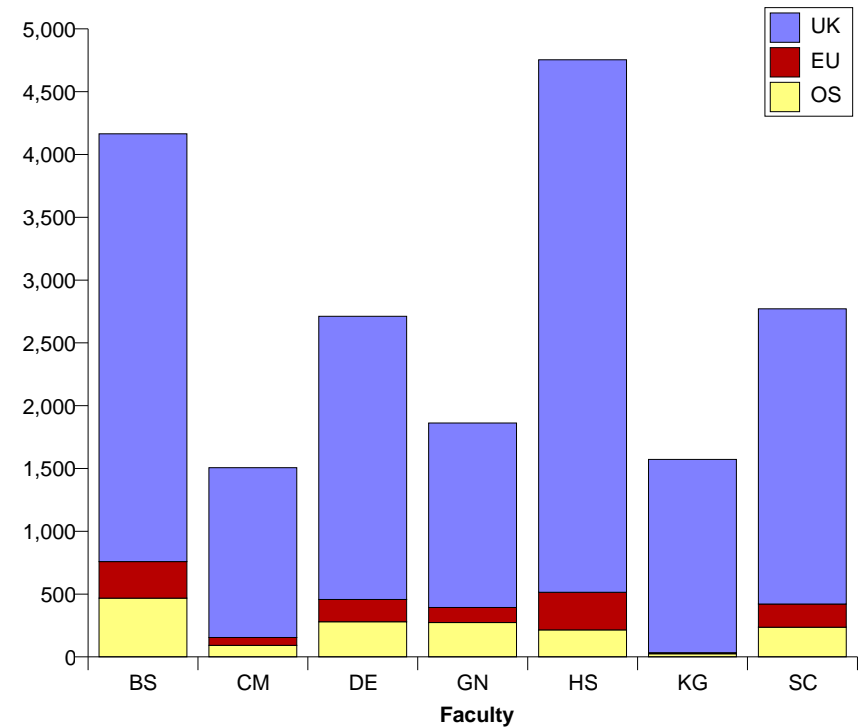
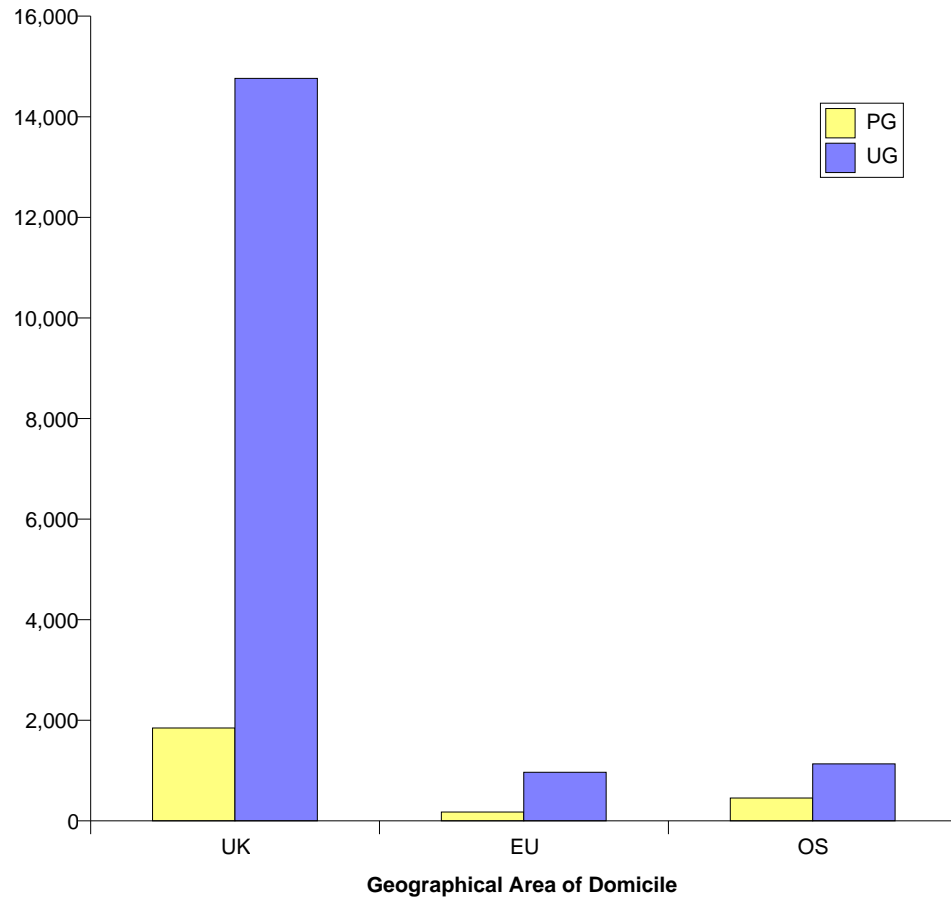
Geographical Area of Domicile

Faculty	UK	EU	OS	Grand Total
PG	1,847	176	454	2,477
UG	14,763	968	1,135	16,866
Grand Total	16,610	1,144	1,589	19,343

Geographical Area of Domicile

Faculty	UK	EU	OS	Grand Total
Art, Design & Architecture	2,255	177	280	2,712
Arts & Social Sciences	4,239	300	215	4,754
Business	3,406	291	468	4,165
CISM	1,352	63	92	1,507
Engineering	1,469	120	273	1,862
Health & Social Care Sciences	1,539	8	25	1,572
Science	2,350	185	236	2,771
Grand Total	16,610	1,144	1,589	19,343

01 Dec 2006 Student Numbers by Geographical Area of Domicile



Census Student Summary - Non-UK Domiciles

Cyprus	204	Switzerland	12	Argentina	2
Greece	204	Trinidad and Tobago	12	Azerbaijan	2
India	172	Denmark	11	Brazil	2
Peoples Republic of China	114	The Isle of Man	11	British Virgin Islands	2
Sri Lanka	111	Australia	10	Cayman Islands	2
Hong Kong	101	Lebanon	10	Columbia	2
France	81	Estonia	8	French Overseas Territories	2
Germany, Federal Republic of	79	Kuwait	8	Grenada	2
Poland	75	Maldives	8	Guyana	2
Pakistan	71	Malta	8	Libya	2
Irish Republic	69	Singapore	8	Macao	2
Republic of Korea (South Korea)	69	Slovakia	8	Malawi	2
Nigeria	64	Angola	7	Moldavia	2
Norway	62	Botswana	7	St Kitts Nevis	2
Portugal	62	Somalia Democratic Republic	7	Albania	1
Sweden	54	South Africa	7	Algeria	1
United Arab Emirates	47	Uganda	7	Anguilla	1
Russia	45	Bahrain	6	Armenia	1
Japan	42	Oman	6	Bermuda	1
Spain	42	Syrian Arab Republic	6	Bolivia	1
Lithuania	39	Zambia	6	Burkina	1
The Channel Islands	38	Barbados	5	Cote d'Ivoire	1
Thailand	37	Egypt	5	Democratic Peoples Republic of Korea	1
Italy	36	Latvia	5	Dominica	1
Gibraltar	35	Phillippines	5	Eritrea	1
Iran	34	Republic of Kazakhstan	5	Ethiopia	1
Mauritius	29	Seychelles	5	Faroe Islands, Greenland	1
China (Taiwan)	25	Sudan	5	Guernsey	1
United States	25	Afghanistan	4	Iceland	1
Belgium	23	Croatia	4	Indonesia	1
Jordan	23	Israel	4	Jersey	1
Austria	22	Morocco	4	Kyrgyzstan / Kirgizia	1
Canada	22	Nepal	4	Liberia	1
Ghana	22	Romania	4	Mongolia	1
Netherlands	21	Sierra Leone	4	Montserrat	1
Malaysia	20	Tanzania	4	Mozambique	1
Kenya	19	Bahamas	3	Panama	1
Saudi Arabia	19	Bosnia and Herzegovina	3	Peoples Democratic Republic of Yemen	1
Zimbabwe	17	Burma	3	Peru	1
Czech Republic	15	Cameroon	3	Slovenia	1
Finland	15	Gambia	3	St Lucia	1
Vietnam	15	Iraq	3	Swaziland	1
Hungary	14	Jamaica	3	Tunisia	1
Turkey	14	Mexico	3	Uruguay	1
Bangladesh	13	New Zealand	3	Grand Total	2,733
Brunei	13	Qatar	3		
Bulgaria	13	Ukraine	3		
Luxembourg	13	Yugoslavia	3		