

**KINGSTON UNIVERSITY STUDENT NUMBERS
01 December 2005 Census - 2005/6 Academic Year**

The attached pages provide a summary profile of Kingston University's student population from the 01 December 2005 Census - the traditional Higher Education census date.

The Census data is extracted from the University Student Records System and corresponds to the HEFCE Higher Education Students' Early Statistics (HESES) Survey census date.

Students excluded: Dormant students; Students studying for the whole of their programme overseas; Incoming exchange students; Affiliated students; Students who left the institution before 01 December 2005; Students who start in 2005/6 but after 01 December 2005.

Page 2	Level & Mode by Faculty
Page 3	Summary Level & Mode; Gender by Faculty
Page 4	Age on Entry Profile
Page 5	Ethnicity Profile
Page 6	Disability Profile
Page 7/8	Fee Status Profile
Page 9	Geographical Area Profile
Page 10	Overseas Domiciles Profile

Census Student Summary - Level & Mode by Faculty/School

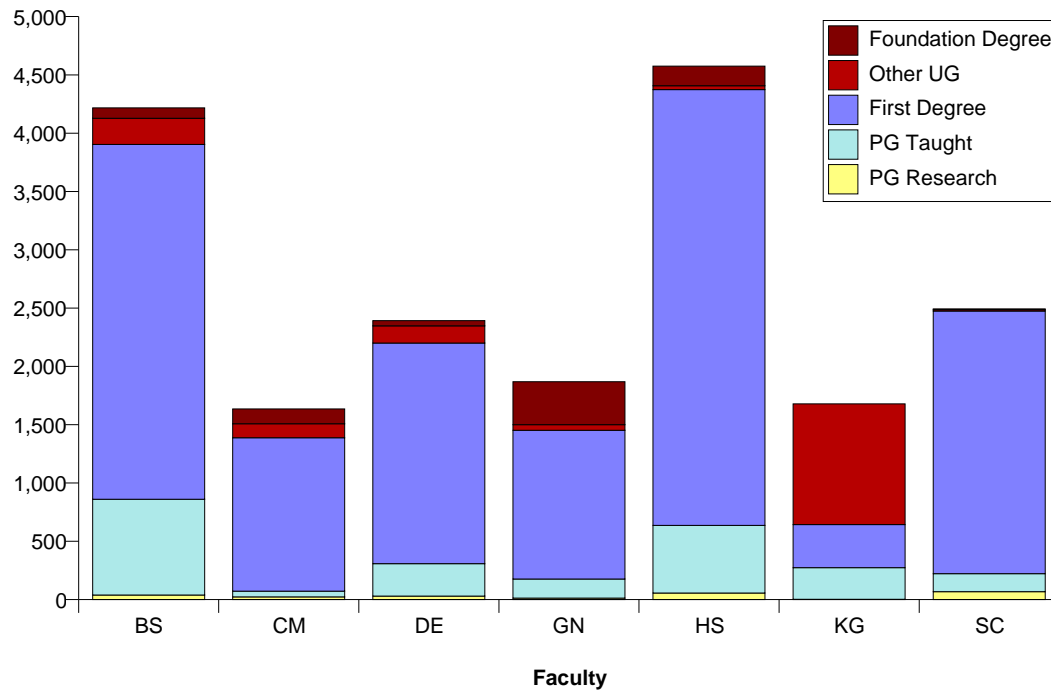
Level of Study

Faculty	Foundation Degree	Other UG	First Degree	PG Taught	PG Research	Grand Total
Art, Design & Architecture	45	148	1,892	278	30	2,393
Arts & Social Sciences	168	33	3,737	580	57	4,575
Business	89	225	3,042	822	39	4,217
CISM	127	120	1,315	49	24	1,635
Engineering	369	48	1,275	164	13	1,869
Health & Social Care Sciences	-	1,036	369	271	3	1,679
Science	7	11	2,253	154	68	2,493
Grand Total	805	1,621	13,883	2,318	234	18,861

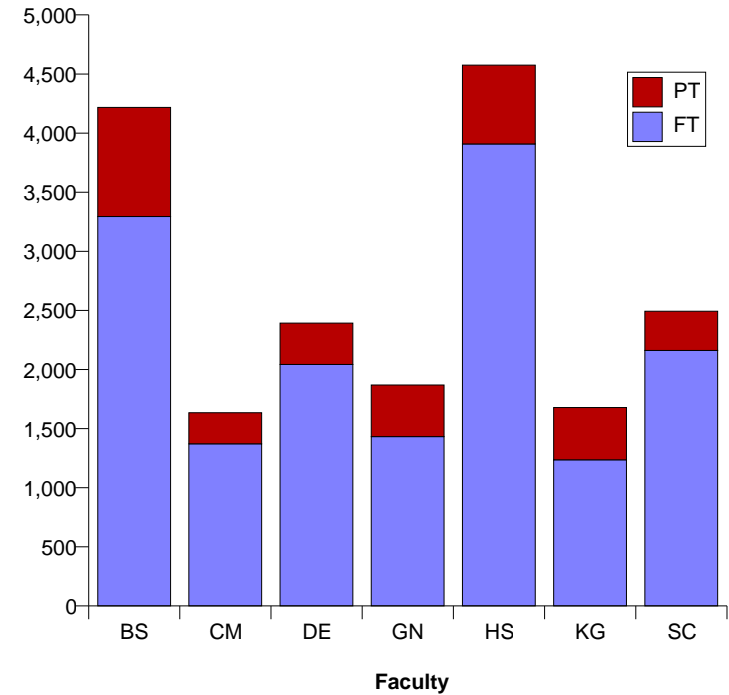
Mode

Faculty	FT	PT	Grand Total
Art, Design & Architecture	2,043	350	2,393
Arts & Social Sciences	3,908	667	4,575
Business	3,294	923	4,217
CISM	1,372	263	1,635
Engineering	1,433	436	1,869
Health & Social Care Sciences	1,236	443	1,679
Science	2,162	331	2,493
Grand Total	15,448	3,413	18,861

01 Dec 2005 Student Numbers by Level



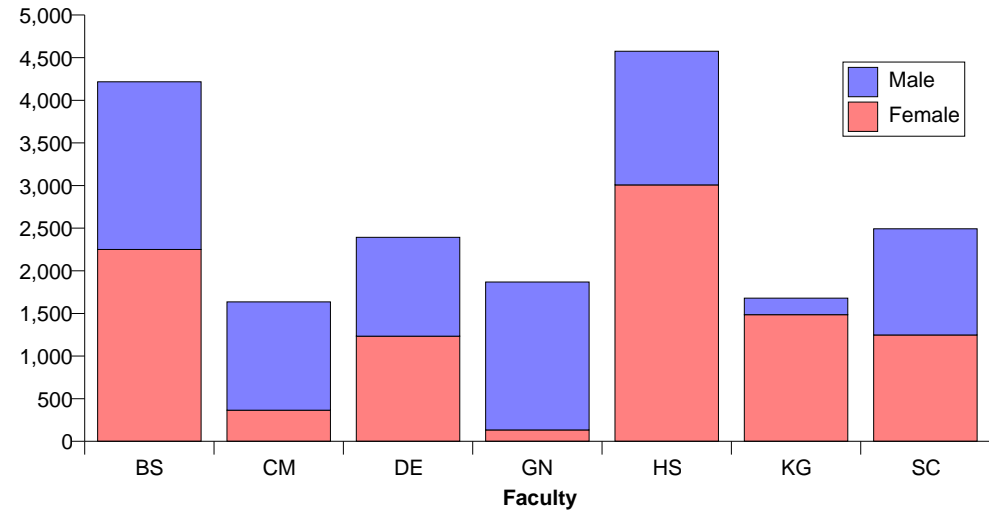
01 Dec 2005 Student Numbers by Mode



Census Student Summary - Gender, Summary Level & Mode

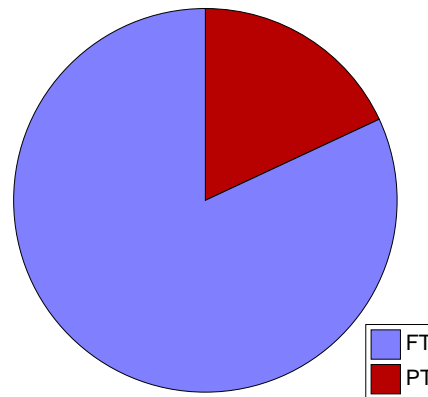
Gender			
Faculty	Female	Male	Grand Total
Art, Design & Architecture	1,234	1,159	2,393
Arts & Social Sciences	3,007	1,568	4,575
Business	2,250	1,967	4,217
CISM	366	1,269	1,635
Engineering	134	1,735	1,869
Health & Social Care Sciences	1,486	193	1,679
Science	1,247	1,246	2,493
Grand Total	9,724	9,137	18,861

01 Dec 2005 Student Numbers by Gender

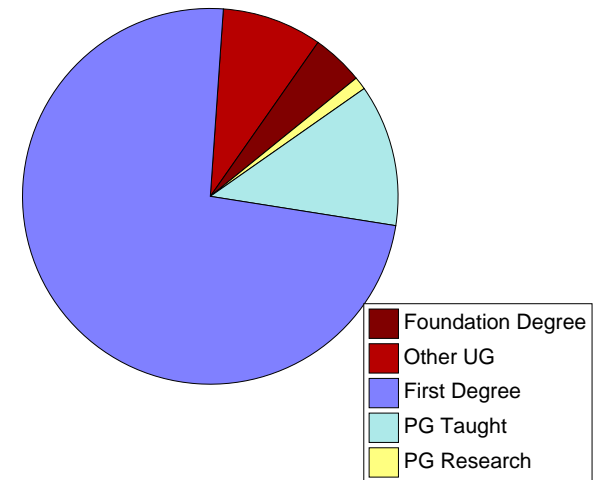


Mode			
Level	FT	PT	Grand Total
Foundation Degree	762	43	805
Other UG	1,432	189	1,621
First Degree	12,192	1,691	13,883
PG Taught	959	1,359	2,318
PG Research	103	131	234
Grand Total	15,448	3,413	18,861

01 Dec 2005 Student Numbers by Mode

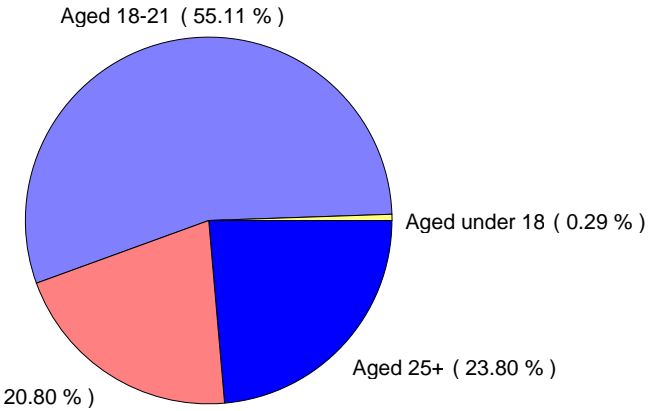


01 Dec 2005 Student Numbers by Level

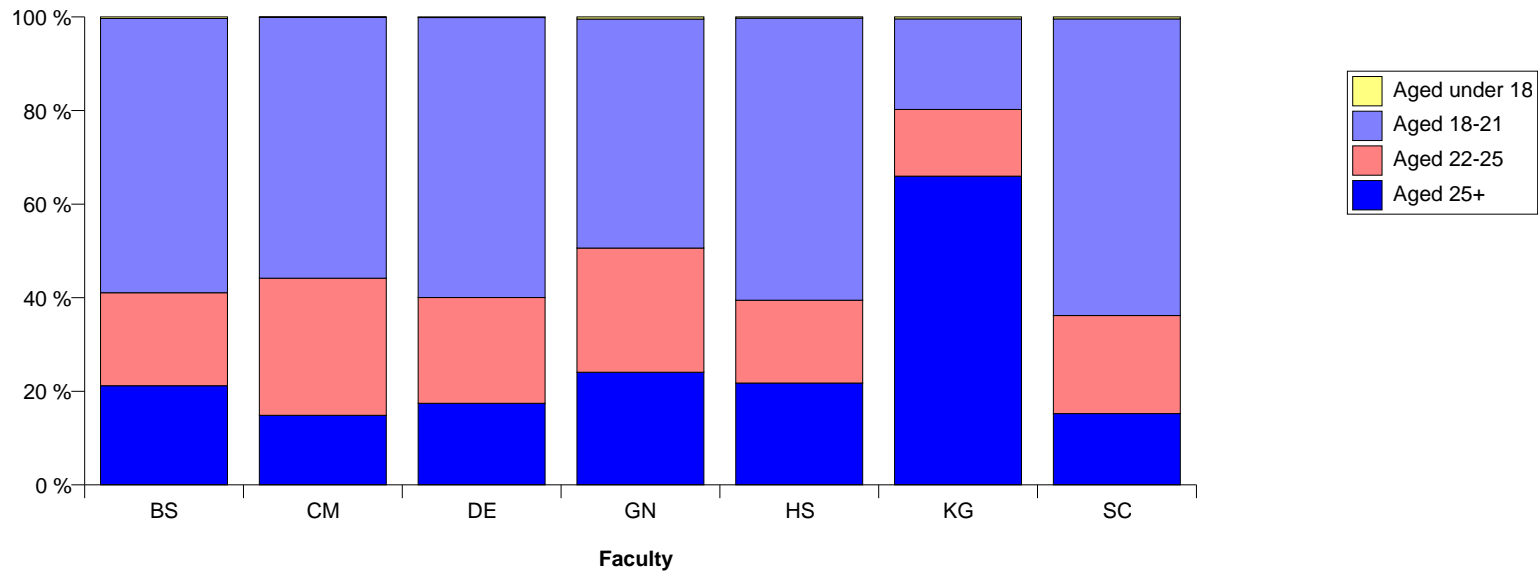


Census Student Summary - Age on Entry Profile

Faculty	Age on Entry				Grand Total
	Aged under 18	Aged 18-21	Aged 22-25	Aged 25+	
Art, Design & Architecture	3	1,432	541	417	2,393
Arts & Social Sciences	12	2,758	809	996	4,575
Business	14	2,471	838	894	4,217
CISM	1	912	479	243	1,635
Engineering	8	915	496	450	1,869
Health & Social Care Sciences	7	325	239	1,108	1,679
Science	10	1,581	522	380	2,493
Grand Total	55	10,394	3,924	4,488	18,861



01 Dec 2005 Student Numbers by Age on Entry

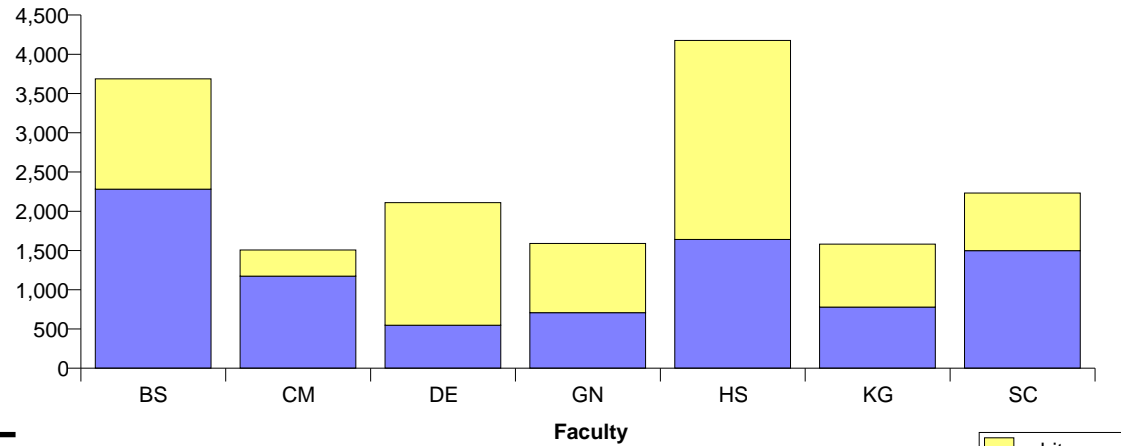


Census Student Summary - Ethnicity Profile

Ethnicity Profile (where available)

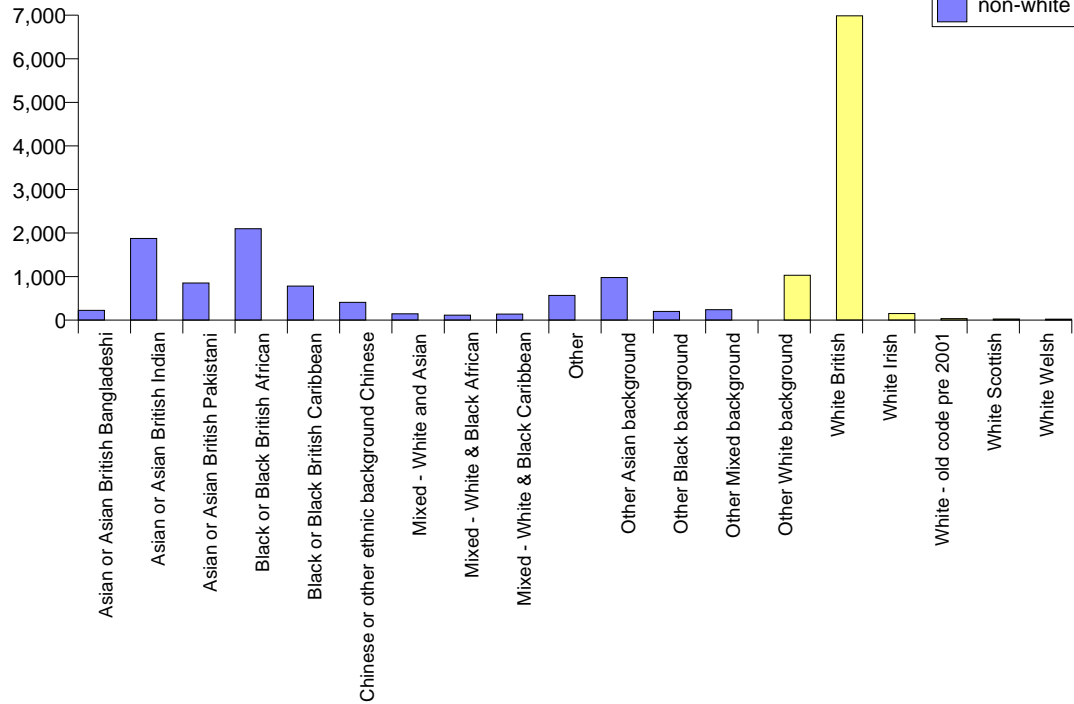
Faculty	non-white	white	Grand Total
Art, Design & Architecture	548	1,561	2,109
Arts & Social Sciences	1,640	2,536	4,176
Business	2,281	1,406	3,687
CISM	1,174	332	1,506
Engineering	708	882	1,590
Health & Social Care Sciences	780	802	1,582
Science	1,498	734	2,232
Grand Total	8,629	8,253	16,882

01 Dec 2005 Student Numbers by Ethnicity



Ethnicity Profile (where available)

Ethnicity	non-white	white	Grand Total
Asian or Asian British Bangladeshi	226	-	226
Asian or Asian British Indian	1,876	-	1,876
Asian or Asian British Pakistani	852	-	852
Black or Black British African	2,099	-	2,099
Black or Black British Caribbean	781	-	781
Chinese or other ethnic background Chinese	410	-	410
Mixed - White and Asian	145	-	145
Mixed - White & Black African	116	-	116
Mixed - White & Black Caribbean	138	-	138
Other	569	-	569
Other Asian background	977	-	977
Other Black background	201	-	201
Other Mixed background	239	-	239
Other White background	-	1,029	1,029
White British	-	6,985	6,985
White Irish	-	153	153
White - old code pre 2001	-	36	36
White Scottish	-	26	26
White Welsh	-	24	24
Grand Total	8,629	8,253	16,882



Census Student Summary - Disability Profile

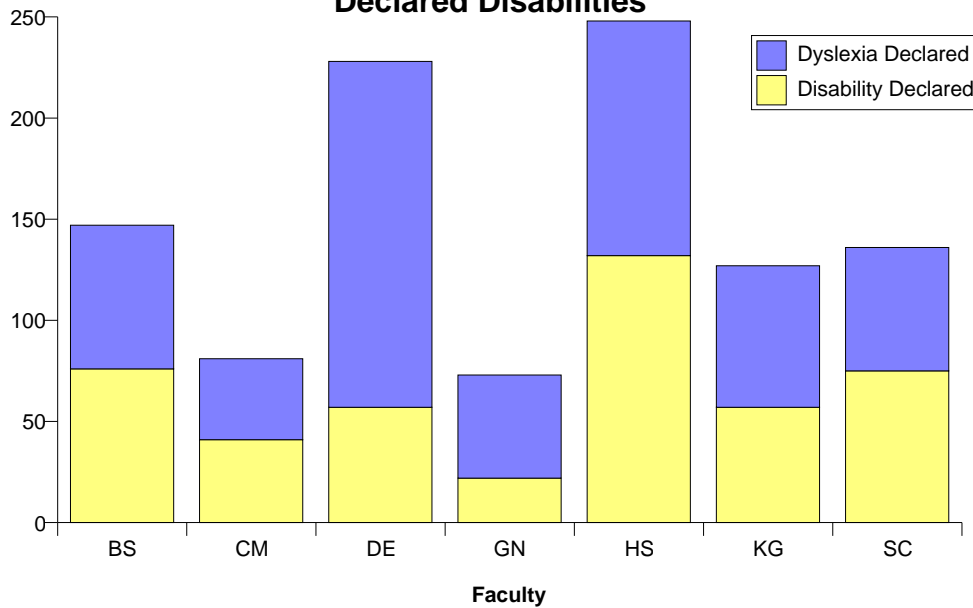
Disability Profile

Faculty	Disability Declared	Dyslexia Declared	No Known Disability	Grand Total
Art, Design & Architecture	57	171	2,165	2,393
Arts & Social Sciences	132	116	4,327	4,575
Business	76	71	4,070	4,217
CISM	41	40	1,554	1,635
Engineering	22	51	1,796	1,869
Health & Social Care Sciences	57	70	1,552	1,679
Science	75	61	2,357	2,493
Grand Total	460	580	17,821	18,861

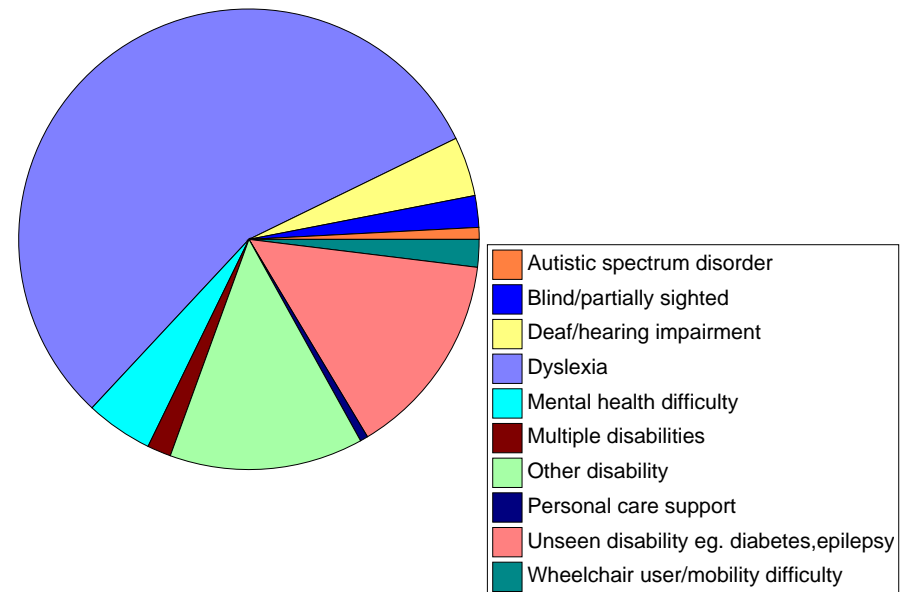
Disability Profile (declared only)

Disability	Total
Autistic spectrum disorder	8
Blind/partially sighted	23
Deaf/hearing impairment	44
Dyslexia	580
Mental health difficulty	48
Multiple disabilities	19
Other disability	141
Personal care support	4
Unseen disability eg. diabetes,epilepsy	151
Wheelchair user/mobility difficulty	22
Grand Total	1,040

Declared Disabilities



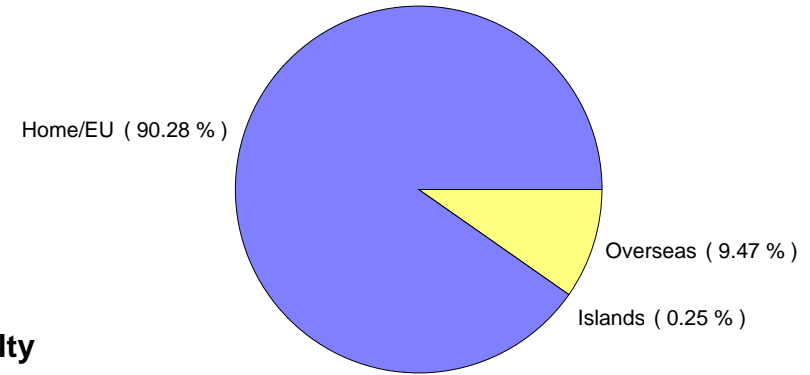
Declared Disabilities



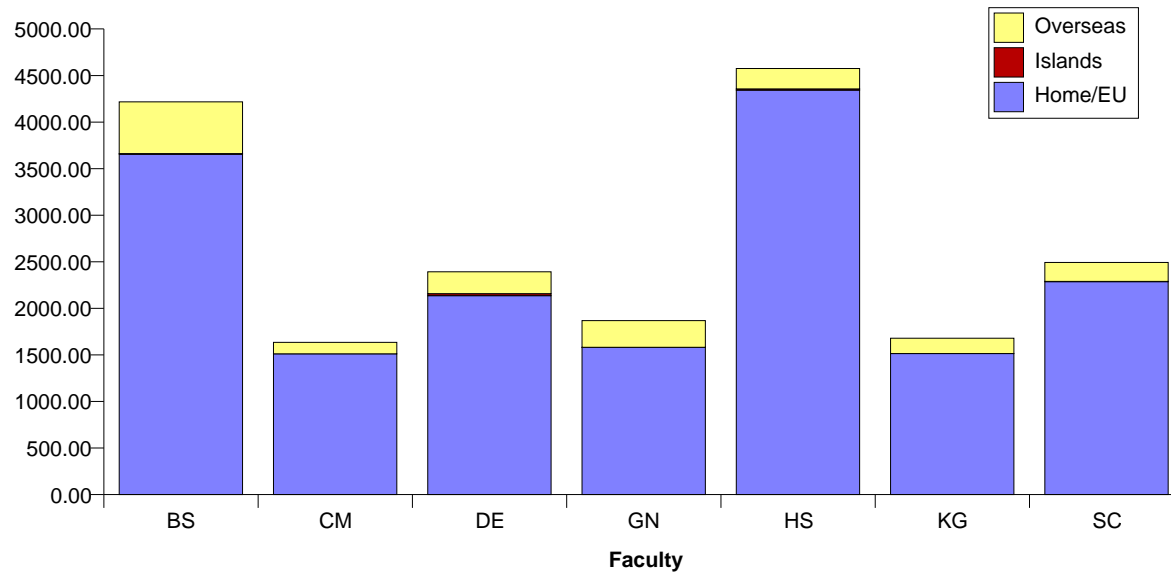
Census Student Summary - Fee Status Profile

Faculty	Fee Status			Grand Total
	Home/EU	Islands	Overseas	
Art, Design & Architecture	2,136	22	235	2,393
Arts & Social Sciences	4,343	13	219	4,575
Business	3,656	6	555	4,217
CISM	1,512	-	123	1,635
Engineering	1,580	2	287	1,869
Health & Social Care Sciences	1,514	1	164	1,679
Science	2,286	3	204	2,493
Grand Total	17,027	47	1,787	18,861

01 Dec 2005 Student Numbers by Fee Status



01 Dec 2005 Student Numbers by Fee Status and Faculty

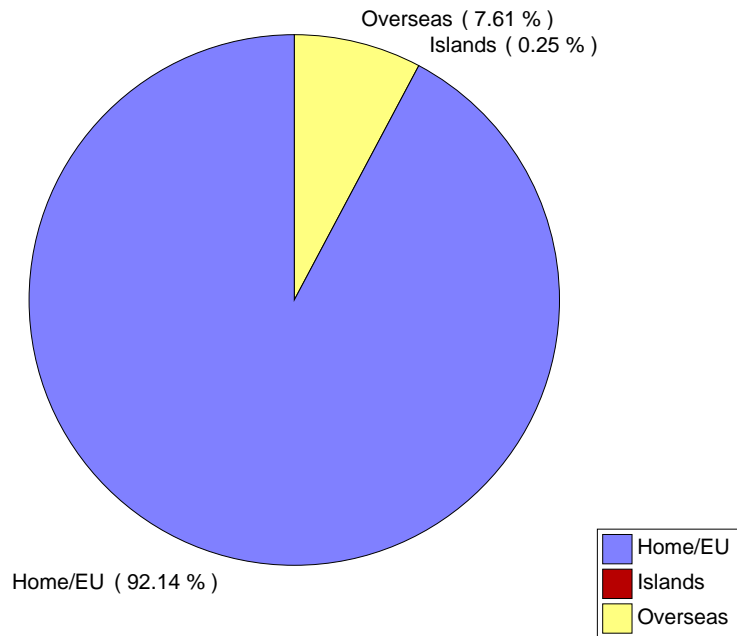


Census Student Summary - Fee Status by Level Summary

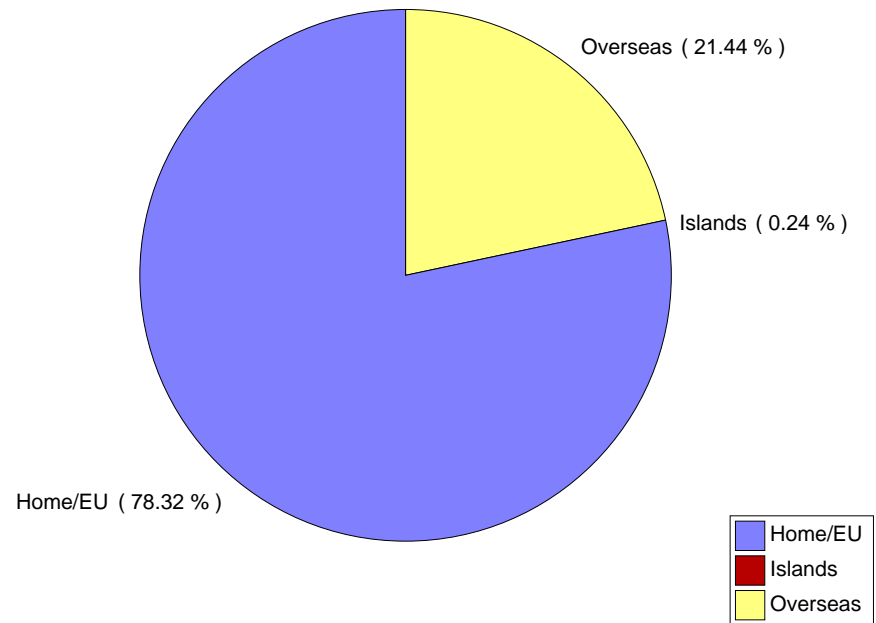
Fee Status

Level	Home/EU	Islands	Overseas	Grand Total
PG	1,991	6	545	2,542
UG	15,036	41	1,242	16,319
Grand Total	17,027	47	1,787	18,861

Undergraduate Fee Status



Postgraduate Fee Status



Census Student Summary - Geographical Area of Domicile

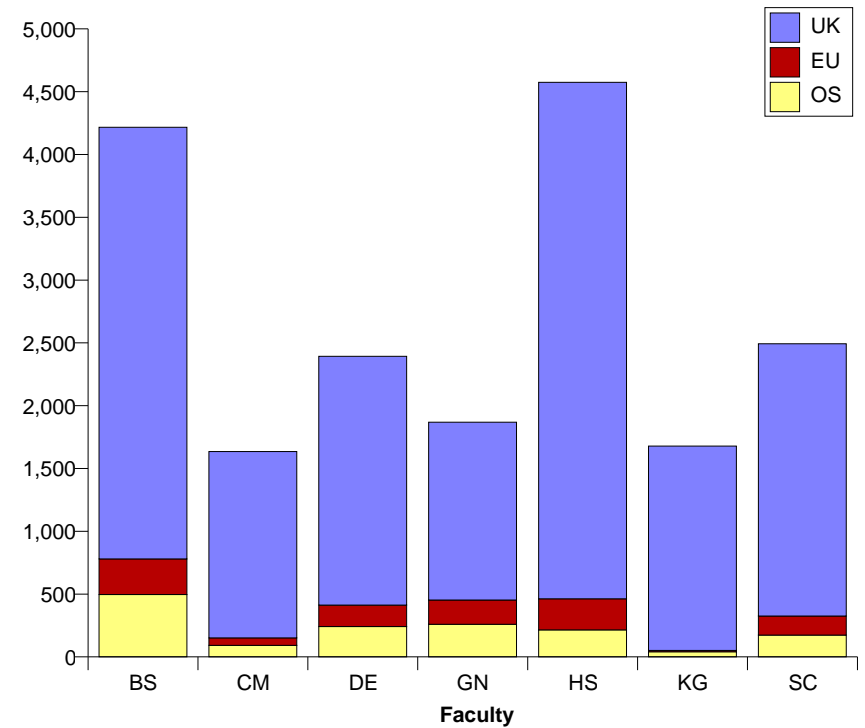
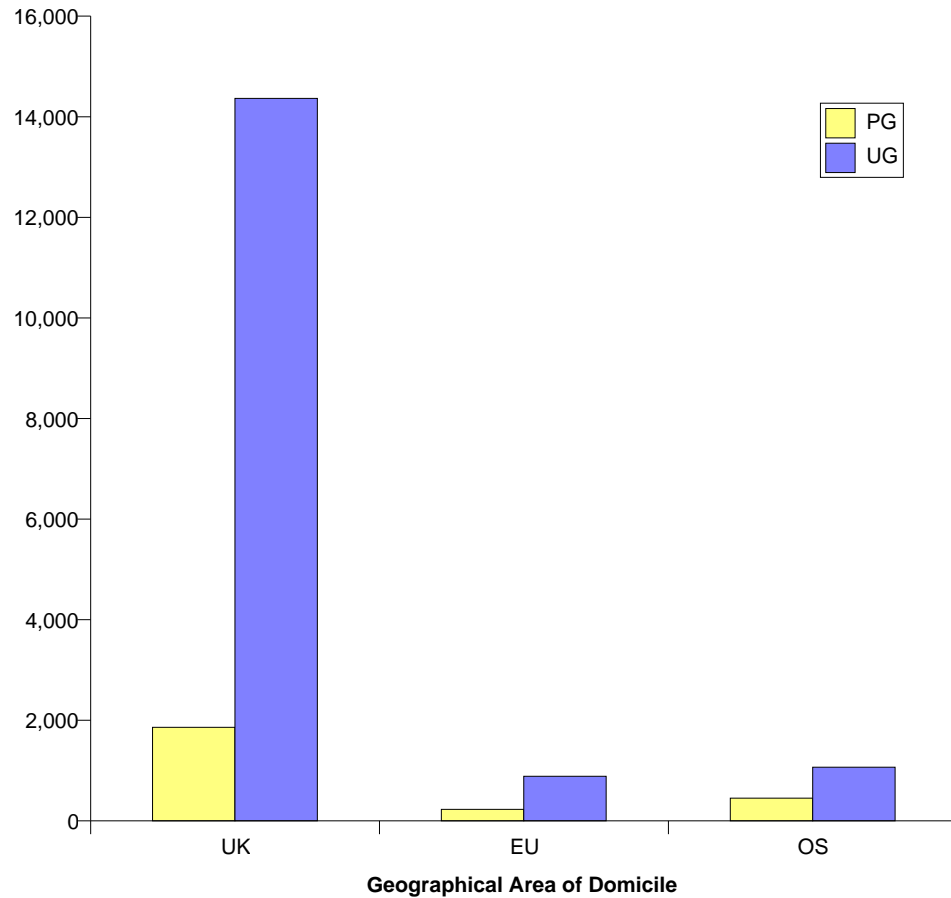
Geographical Area of Domicile

Faculty	UK	EU	OS	Grand Total
PG	1,861	229	452	2,542
UG	14,364	887	1,068	16,319
Grand Total	16,225	1,116	1,520	18,861

Geographical Area of Domicile

Faculty	UK	EU	OS	Grand Total
Art, Design & Architecture	1,980	171	242	2,393
Arts & Social Sciences	4,113	247	215	4,575
Business	3,437	284	496	4,217
CISM	1,484	59	92	1,635
Engineering	1,416	193	260	1,869
Health & Social Care Sciences	1,627	11	41	1,679
Science	2,168	151	174	2,493
Grand Total	16,225	1,116	1,520	18,861

01 Dec 2005 Student Numbers by Geographical Area of Domicile



Census Student Summary - Non-UK Domiciles

Greece	247	South Africa	12	Azerbaijan	2
Cyprus	183	Brunei	11	Bermuda	2
Sri Lanka	137	Switzerland	11	Brazil	2
India	129	Luxembourg	10	British Virgin Islands	2
Peoples Republic of China	120	Trinidad and Tobago	10	Columbia	2
Hong Kong	94	Austria	9	Democratic Peoples Republic of Korea	2
France	91	Isle of Man (The)	9	Ecuador	2
Germany, Federal Republic of	83	Kuwait	9	Estonia	2
Pakistan	76	Angola	8	Ethiopia	2
Irish Republic	71	Bulgaria	8	Iceland	2
Portugal	69	Lebanon	8	Indonesia	2
Norway	67	Malta	8	Iraq	2
Republic of Korea (South Korea)	66	Australia	7	Kyrgyzstan / Kirgizia	2
Nigeria	61	Botswana	7	Macao	2
Japan	54	Burma	7	Phillippines	2
Poland	54	Singapore	7	St Kitts Nevis	2
Sweden	50	Uganda	7	Tunisia	2
United Arab Emirates	45	Barbados	6	Yugoslavia	2
Spain	41	Qatar	6	Albania	1
Italy	40	Morocco	5	Argentina	1
Thailand	38	Republic of Kazakhstan	5	Armenia	1
Russia	37	Slovakia	5	Byelorussia/Belarus	1
Channel Islands	35	Somalia Democratic Republic	5	Chile	1
United States	29	Croatia	4	Dominica	1
Ghana	28	Grenada	4	Falkland Islands	1
Netherlands	26	Latvia	4	Faroe Islands, Greenland	1
China (Taiwan)	25	Maldives	4	Fiji	1
Iran	25	Oman	4	Lesotho	1
Mauritius	25	Romania	4	Libya	1
Gibraltar	24	Sudan	4	Malawi	1
Jordan	24	Tanzania	4	Mali	1
Kenya	23	Vietnam	4	Nepal	1
Belgium	21	Algeria	3	New Zealand	1
Zimbabwe	21	Bahamas	3	Peoples Democratic Republic of Yemen	1
Lithuania	20	Bosnia and Herzegovina	3	Peru	1
Canada	17	Egypt	3	Sierra Leone	1
Finland	17	Gambia	3	Stateless	1
Bahrain	16	Israel	3	St Lucia	1
Turkey	16	Jamaica	3	Tajikistan	1
Saudi Arabia	15	Mexico	3	Turkmenistan	1
Hungary	14	Seychelles	3	Ukraine	1
Bangladesh	12	Slovenia	3	Venezuela	1
Czech Republic	12	Syrian Arab Republic	3	Grand Total	2,636
Denmark	12	Zambia	3		
Malaysia	12	Afghanistan	2		